

## Anti-CD11a Antibody (A13570)

### Specifications:

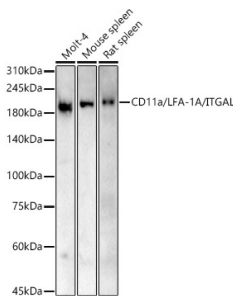
|                        |   |
|------------------------|---|
| Name:                  | Anti-CD11a Antibody   |
| Description:           | Rabbit polyclonal antibody to CD11a.  |
| Applications:          | WB, IHC, ICC/IF   |
| Recommended Dilutions: | WB: 1:100-1:500, IHC: 1:50-1:100, ICC/IF: 1:50-1:100  |
| Reactivity:            | Human, Mouse, Rat   |
| Immunogen:             | Recombinant fusion protein containing a sequence corresponding to amino acids 1-1170 of human CD11a/LFA-1A/ITGAL (P20701).  |
| Sequence:              | <pre>MKDSCITVMAMALLSGFFFFAPASSYNLDVRGARSFSPPRAGRHFYRVLQVGNVIV GAPGEGNSTGSLYQCQSGTGHCLPVTLRGSNYTSKYLGMTLATDPTDGSILACDPGLS RTCDQNTYLSGLCYLFRQNLQGPMLQGRPGFQECIKGNVDLVFLFDGSMQLPDEFQK ILDFMKDVMKKLSNTSYQFAAVQFSTSYKTEFDFSDYVVRKDPDALLKHVKHMLLTN TFGAINYVATEVFREELGARPDATKVLIIITDGEATDSGNIDAADIIIRYIIGIKHF QTKESQETLHKFASKPASEFVKILDTFEKLDLFTLQKIIYVIEGTSKQDLTSFNME LSSSGISADLSRGHAVVGAVGAKDWAGGFLDLKADLQDDTFIGNEPLTPEVRAGYLG YTVTWPSPRQKTSLLASGAPRYQHMGRVLLFQEPQGGGHWSQVQTIHGTQIGSYFGGEL CGVDVDQDGETELLIGAPLFYGEQRGGRVFIYQRRQLGFEEVSELQGDPGYPLGRFG EAITALTDINGDGLVDVAVGAPLEEQGAVYIFNGRHGGLSPQPSQRIEGTQVLSGIQW FGRSIHGVDLEGDGLADVAVGAESQMIVLSSRPVDMVTLMSFSPAEIPVHEVECSY STSNKMKKEGVNITICFQIKSLIPQFQGRVANLTYTLQLDGHRRRRRGLFPGGRHEL RNIAVTTSMSCTDFSFHFPVCVQDLISPINVSLNFSLWEEEGTPRDQRAQKGDIPPIL RPSLHSETWEIPFEKNCGEDKKCEANLRVSFSPARSRALRLTAFASLSVELSLSNLEE DAYWVQLDLHFPPGLSFRKVEMLKPHSQIPVSCEELPEESRLLSRALSCNVSSPIFKA GHSVALQMMFNTLVNSSWGDSVELHANVTCNNEDSDLLEDNSATTIIPILYINILIQ DQEDSTLYVSFTPKGPKIHQVKHMYQVRIQPSIHDHNIPTLEAVVGVPQPPSEGPITH QWSVQMEPPVPCHYEDLERLPDAAEPCLPGALFRCPVVFRQEILVQVIGTLELVGEIE ASSMFSLCSSLISIFNSSKHFFLYGSNASLAQVVMKVDVVYEQMLYLYVLSGIGLL LLLLIFIVLYKVGFFKRNLEKMEAGRGPNGIPAEDSEQLASGQEAGDPGCLKPLHE KDSESGGGKD</pre> |
| Host:                  | Rabbit  |
| Clonality:             | Polyclonal  |
| Isotype:               | IgG   |
| Conjugate:             | Unconjugated  |
| Purification:          | Affinity purification.  |
| Molecular Weight:      | 180 kDa   |
| Product Form:          | Liquid  |

## Anti-CD11a Antibody (A13570)

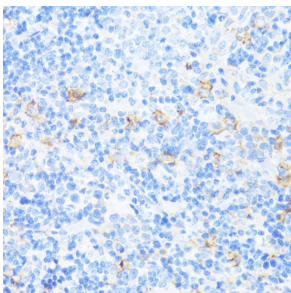
### Specifications continued:

|              |  |
|--------------|--|
| Formulation: | Supplied in Phosphate Buffered Saline, pH 7.3, with 50% Glycerol and 0.05% Proclin 300.      |
| Storage:     | Shipped at 4°C. Upon delivery aliquot and store at -20°C. Avoid freeze / thaw cycles.        |
| Disclaimer:  | This product is for research use only. It is not intended for diagnostic or therapeutic use. |

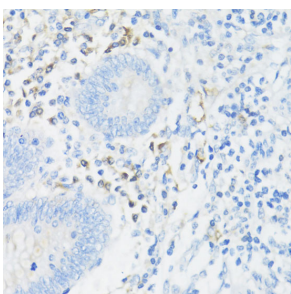
### Images:



Western blot analysis of various lysates, using Anti-CD11a Antibody (A13570) at 1:500 dilution. The secondary antibody was Goat Anti-Rabbit IgG H&L Antibody (HRP) at 1:10,000 dilution. Lysates/proteins were present at 25µg per lane. The blocking buffer used was 3% non-fat dry milk in TBST. Detection was with a ECL Basic Kit. Exposure time: 180s.



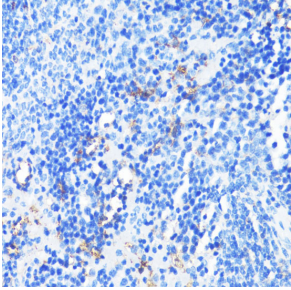
Immunohistochemistry analysis of paraffin-embedded rat spleen using Anti-CD11a Antibody (A13570) at a dilution of 1:100 (40x lens). Perform microwave antigen retrieval with 10 mM PBS buffer pH 7.2 before commencing with IHC staining protocol.



Immunohistochemistry analysis of paraffin-embedded human appendix tissue using Anti-CD11a Antibody (A13570) at a dilution of 1:100 (40x lens). Perform microwave antigen retrieval with 10 mM PBS buffer pH 7.2 before commencing with IHC staining protocol.

## Anti-CD11a Antibody (A13570)

Images continued:



Immunohistochemistry analysis of paraffin-embedded mouse spleen using Anti-CD11a Antibody (A13570) at a dilution of 1:100 (40x lens). Perform microwave antigen retrieval with 10 mM PBS buffer pH 7.2 before commencing with IHC staining protocol.