

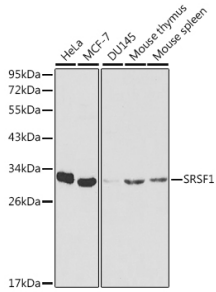
Anti-SRSF1 Antibody (A13572)

Specifications:

Name:	Anti-SRSF1 Antibody
Description:	Rabbit polyclonal antibody to SRSF1.
Applications:	WB, IHC, IF
Recommended Dilutions:	WB: 1:500-1:2000, IHC: 1:50-1:200, IF: 1:50-1:200
Reactivity:	Human, Mouse, Rat
Immunogen:	Recombinant fusion protein containing a sequence corresponding to amino acids 1-248 of human SRSF1 (NP_008855.1).
Sequence:	MSGGGVIRGPAGNNDCRIYVGNLPPDIRTKDIEDVFYKYGAIRDIDLKNRRGGPPFAF VEFEDPRDAEDAVYGRDGYDYDGYRLRVEFPRSGRGTGRGGGGGGGGGAPRGRYGPSS RRSENRVVVSGLPPSGSWQDLKDHMREAGDVCYADVYRDGTGVVEFVRKEDMTYAVRK LDNTKFRSHEGETAYIRVKVDGPRSPSYGRSRSRSRSRSRSRSNSRSRSYSPPRRSR GSPRYSPRHSRSRSRT
Host:	Rabbit
Clonality:	Polyclonal
Isotype:	IgG
Conjugate:	Unconjugated
Purification:	Affinity purification.
Molecular Weight:	30kDa
Formulation:	Supplied in Phosphate Buffered Saline, pH 7.30, with 0.02% Sodium Azide and 50% Glycerol.
Storage:	Shipped at 4°C. Upon delivery aliquot and store at -20°C. Avoid freeze / thaw cycles.
Disclaimer:	This product is for research use only. It is not intended for diagnostic or therapeutic use.

Anti-SRSF1 Antibody (A13572)

Images:

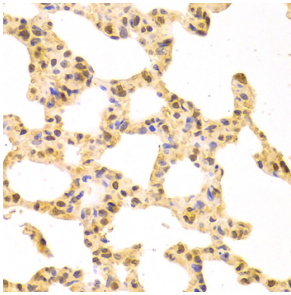


Western blot analysis of extracts of various cell lines, using Anti-SRSF1 Antibody (A1649) at 1:1,000 dilution.

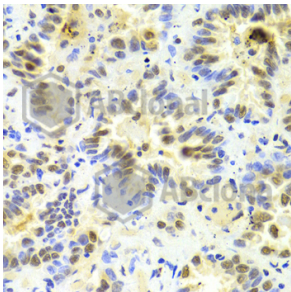
Secondary antibody: Goat Anti-Rabbit IgG (H+L) (HRP) (AS014) at 1:10,000 dilution.

Lysates / proteins: 25µg per lane.

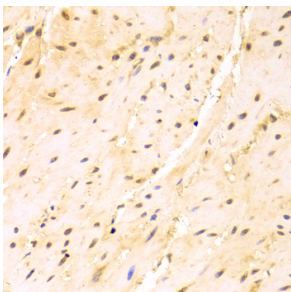
Blocking buffer: 3% non-fat dry milk in TBST.



Immunohistochemistry of paraffin-embedded rat lung using Anti-SRSF1 Antibody (A1649) at dilution of 1:100 (40x lens).



Immunohistochemistry of paraffin-embedded human lung cancer using Anti-SRSF1 Antibody (A1649) at dilution of 1:100 (40x lens).



Immunohistochemistry of paraffin-embedded mouse esophagus using Anti-SRSF1 Antibody (A1649) at dilution of 1:100 (40x lens).