

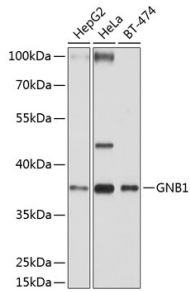
## Anti-GNB1 Antibody (A13713)

### Specifications:

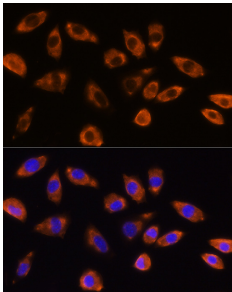
Name:	Anti-GNB1 Antibody
Description:	Rabbit polyclonal antibody to GNB1.
Applications:	WB, ICC/IF
Recommended Dilutions:	WB: 1:1,000-1:4,000, ICC/IF: 1:50-1:200
Reactivity:	Human, Mouse
Immunogen:	Recombinant fusion protein containing a sequence corresponding to amino acids 1-340 of human GNB1 (NP_002065.1).
Sequence:	MSELDQLRQEAEQLKNQIRDARKACADATLSQITNNIDPVGRIQMRTRRTLGRHLAKI YAMHWGTDSRLLVSASQDGKLIWDSYTTNKVHAIPLRSSWVMTCAAYAPSGNYVACGG LDNICSYINLKTREGNVRVSRELAGHTGYLSCCRFLDDNQIVTSSGDTTCALWDIETG QQTTFGTGHTGDVMSLSLAPDTRLFVSGACDASAKLWDVREGMCRQFTFGHESDINAI CFFPNGNAFATGSDDATCRLFDLRADQELMTYSHDNIICGITSVSFSKSGRLLLAGYD DFNCNVWDALKADRAGVLAGHDNRVSLGLVTDGMAVATGSWDSFLKIWN
Host:	Rabbit
Clonality:	Polyclonal
Isotype:	IgG
Conjugate:	Unconjugated
Purification:	Affinity purification.
Molecular Weight:	37 kDa
Product Form:	Liquid
Formulation:	Supplied in Phosphate Buffered Saline, pH 7.3, with 50% Glycerol and 0.02% Sodium Azide.
Storage:	Shipped at 4°C. Upon delivery aliquot and store at -20°C. Avoid freeze / thaw cycles.
Disclaimer:	This product is for research use only. It is not intended for diagnostic or therapeutic use.

## Anti-GNB1 Antibody (A13713)

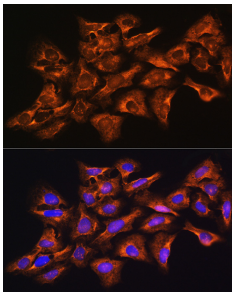
### Images:



Western blot analysis of extracts of various cell lines, using Anti-GNB1 Antibody (A13713) at 1:1,000 dilution. The secondary antibody was Goat Anti-Rabbit IgG H&L Antibody (HRP) at 1:10,000 dilution. Lysates/proteins were present at 25 $\mu$ g per lane. The blocking buffer used was 3% non-fat dry milk in TBST. Detection was with a ECL Basic Kit. Exposure time: 5s.



Immunofluorescence analysis of L929 cells using Anti-GNB1 Antibody (A13713) at a dilution of 1:100 (40x lens). DAPI was used to stain the cell nuclei (blue).



Immunofluorescence analysis of U-2 OS cells using Anti-GNB1 Antibody (A13713) at a dilution of 1:100 (40x lens). DAPI was used to stain the cell nuclei (blue).