

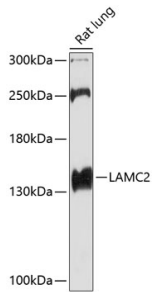
Anti-LAMC2 Antibody (A13714)

Specifications:

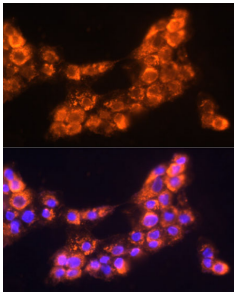
| | |
|------------------------|---|
| Name: | Anti-LAMC2 Antibody |
| Description: | Rabbit polyclonal antibody to LAMC2. |
| Applications: | WB, ICC/IF |
| Recommended Dilutions: | WB: 1:500-1:2,000, ICC/IF: 1:50-1:100 |
| Reactivity: | Human, Mouse, Rat |
| Immunogen: | Recombinant fusion protein containing a sequence corresponding to amino acids 613-800 of human LAMC2 (NP_005553.2). |
| Sequence: | YNQVKIQMDQFMQQLQRMEALISKAQGGDGVVPDTELEGRMQQAEQALQDILRDAQIS EGASRSLGLQLAKVRSQENSYQSRLDDLKMTVERVRALGSQYQNRVRDTHRLITQMQL SLAESEASLGNTNIPASDHVYVGPNGFKSLAQEATRLAESHVESASNMEQLTRETEDYS KQALSLVRKALHEG |
| Host: | Rabbit |
| Clonality: | Polyclonal |
| Isotype: | IgG |
| Conjugate: | Unconjugated |
| Purification: | Affinity purification. |
| Molecular Weight: | 131 kDa |
| Product Form: | Liquid |
| Formulation: | Supplied in Phosphate Buffered Saline, pH 7.3, with 50% Glycerol and 0.05% Proclin 300. |
| Storage: | Shipped at 4°C. Upon delivery aliquot and store at -20°C. Avoid freeze / thaw cycles. |
| Disclaimer: | This product is for research use only. It is not intended for diagnostic or therapeutic use. |

Anti-LAMC2 Antibody (A13714)

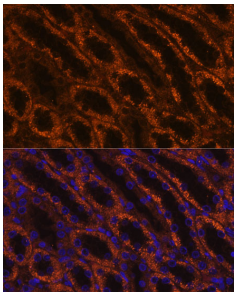
Images:



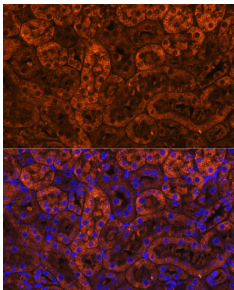
Western blot analysis of extracts of rat lung, using Anti-LAMC2 Antibody (A13714) at 1:1,000 dilution. The secondary antibody was Goat Anti-Rabbit IgG H&L Antibody (HRP) at 1:10,000 dilution. Lysates/proteins were present at 25 μ g per lane. The blocking buffer used was 3% non-fat dry milk in TBST. Detection was with a ECL Basic Kit. Exposure time: 60s.



Immunofluorescence analysis of A431 cells using Anti-LAMC2 Antibody (A13714) at a dilution of 1:100 (40x lens). DAPI was used to stain the cell nuclei (blue).



Immunofluorescence analysis of rat kidney using Anti-LAMC2 Antibody (A13714) at a dilution of 1:100 (40x lens). DAPI was used to stain the cell nuclei (blue).



Immunofluorescence analysis of mouse kidney using Anti-LAMC2 Antibody (A13714) at a dilution of 1:100 (40x lens). DAPI was used to stain the cell nuclei (blue).