

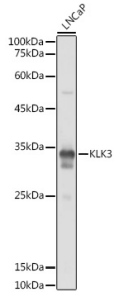
## Anti-Prostate Specific Antigen Antibody (A13836)

### Specifications:

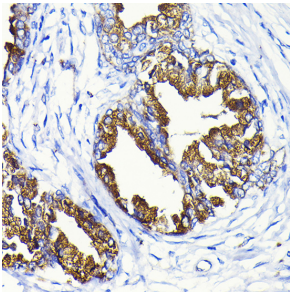
Name:	Anti-Prostate Specific Antigen Antibody
Description:	Rabbit polyclonal antibody to Prostate Specific Antigen.
Applications:	WB, IHC, ICC/IF, IP
Recommended Dilutions:	WB: 1:500-1:1,000, IHC: 1:50-1:200, ICC/IF: 1:50-1:200, IP: 1:1,000-1:5,000
Reactivity:	Human, Mouse
Immunogen:	Recombinant fusion protein containing a sequence corresponding to amino acids 30-261 of human KLK3 (NP_001639.1).
Sequence:	ECEKHSQPWQVLVASRGRAVCGGVLVHPQWVLTAAHCIRNKSVILLGRHSLFHPEDTG QVFQVSHSFPHPPLYDMSLLKNRFLRPGDDSSHDLMLLRLSEPAELTDAVKVMDLPTQE PALGTTTCYASGWGSIEPEEFLTPKKLQCVDLHVISNDVCAQVHPQKVTKFMLCAGRWT GGKSTCSGDSGGPLVCNGVLQGITSWGSEPCALPERPSLYTKVVHYRKWIKDTIVANP
Host:	Rabbit
Clonality:	Polyclonal
Isotype:	IgG
Conjugate:	Unconjugated
Purification:	Affinity purification.
Molecular Weight:	34 kDa
Product Form:	Liquid
Formulation:	Supplied in Phosphate Buffered Saline, pH 7.3, with 50% Glycerol and 0.02% Sodium Azide.
Storage:	Shipped at 4°C. Upon delivery aliquot and store at -20°C. Avoid freeze / thaw cycles.
Disclaimer:	This product is for research use only. It is not intended for diagnostic or therapeutic use.

## Anti-Prostate Specific Antigen Antibody (A13836)

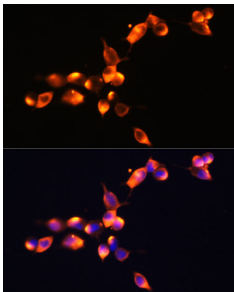
### Images:



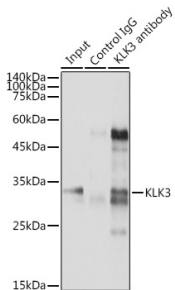
Western blot analysis of extracts of LNCaP cells, using Anti-Prostate Specific Antigen Antibody (A13836) at 1:1,000 dilution. The secondary antibody was Goat Anti-Rabbit IgG H&L Antibody (HRP) at 1:10,000 dilution. Lysates/proteins were present at 25µg per lane. The blocking buffer used was 3% non-fat dry milk in TBST. Detection was with a ECL Basic Kit. Exposure time: 1s.



Immunohistochemistry analysis of paraffin-embedded human prostate cancer using Anti-Prostate Specific Antigen Antibody (A13836) at a dilution of 1:100 (40x lens). Perform high pressure antigen retrieval with 10 mM citrate buffer pH 6.0 before commencing with IHC staining protocol.



Immunofluorescence analysis of LNCaP cells using Anti-Prostate Specific Antigen Antibody (A13836) at a dilution of 1:100 (40x lens). DAPI was used to stain the cell nuclei (blue).



Immunoprecipitation analysis of 300µg extracts of LNCaP cells using 3µg of Anti-Prostate Specific Antigen Antibody (A13836). This Western blot was performed on the immunoprecipitate using Anti-Prostate Specific Antigen Antibody (A13836) at a dilution of 1:2000.