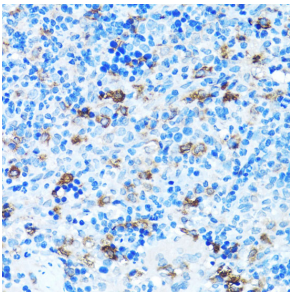


## Anti-FGFR2 Antibody (A13850)

### Specifications:

Name:	Anti-FGFR2 Antibody
Description:	Rabbit polyclonal antibody to FGFR2.
Applications:	IHC
Recommended Dilutions:	IHC: 1:50-1:200
Reactivity:	Human, Mouse, Rat
Immunogen:	A synthetic peptide corresponding to a sequence within amino acids 1-100 of human FGFR2 (NP_000132.3).
Sequence:	MVSWGFRFICLVVVTMATLSLARPSFSLVEDTTLEPEEPPTKYQISQPEVYVAAPGESL EVRCLLKDAAVISWTKDGVHLGPNNRTVLIGEYLQIKGATPR
Host:	Rabbit
Clonality:	Polyclonal
Isotype:	IgG
Conjugate:	Unconjugated
Purification:	Affinity purification.
Product Form:	Liquid
Formulation:	Supplied in Phosphate Buffered Saline, pH 7.3, with 50% Glycerol and 0.02% Sodium Azide.
Storage:	Shipped at 4°C. Upon delivery aliquot and store at -20°C. Avoid freeze / thaw cycles.
Disclaimer:	This product is for research use only. It is not intended for diagnostic or therapeutic use.

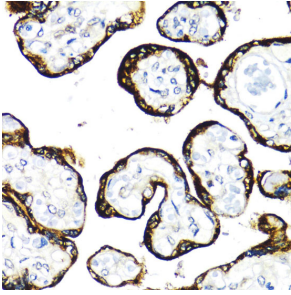
### Images:



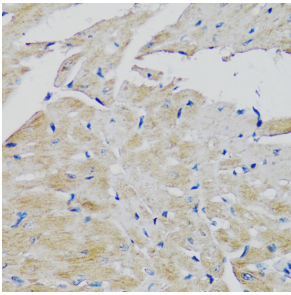
Immunohistochemistry analysis of paraffin-embedded rat spleen using Anti-FGFR2 Antibody (A13850) at a dilution of 1:100 (40x lens).

## Anti-FGFR2 Antibody (A13850)

Images continued:



Immunohistochemistry analysis of paraffin-embedded human placenta using Anti-FGFR2 Antibody (A13850) at a dilution of 1:100 (40x lens).



Immunohistochemistry analysis of paraffin-embedded mouse heart using Anti-FGFR2 Antibody (A13850) at a dilution of 1:100 (40x lens).