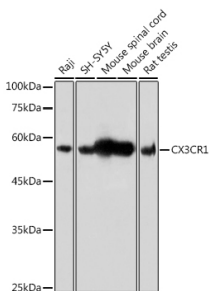


Anti-CX3CR1 Antibody (A14239)

Specifications:

Name:	Anti-CX3CR1 Antibody
Description:	Rabbit polyclonal antibody to CX3CR1.
Applications:	WB, IHC
Recommended Dilutions:	WB: 1:100-1:500, IHC: 1:50-1:200
Reactivity:	Human, Mouse, Rat
Immunogen:	A synthetic peptide corresponding to a sequence within amino acids 100-200 of human CX3CR1 (NP_001328.1).
Sequence:	AMCKFTTAAFFFIGFFGSIFFITVISIDRYLAIVLAANSMNNRTVQHGVITISLGVWAAA ILVAAPQFMFTKQKENECLGDYPEVLQEIWPVLRNVETNFLGF
Host:	Rabbit
Clonality:	Polyclonal
Isotype:	IgG
Conjugate:	Unconjugated
Purification:	Affinity purification.
Molecular Weight:	52 kDa
Product Form:	Liquid
Formulation:	Supplied in Phosphate Buffered Saline, pH 7.3, with 50% Glycerol and 0.05% Proclin 300.
Storage:	Shipped at 4°C. Upon delivery aliquot and store at -20°C. Avoid freeze / thaw cycles.
Disclaimer:	This product is for research use only. It is not intended for diagnostic or therapeutic use.

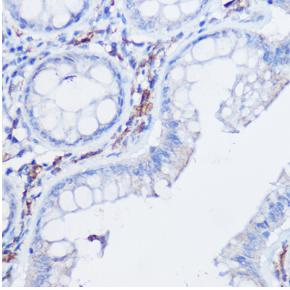
Images:



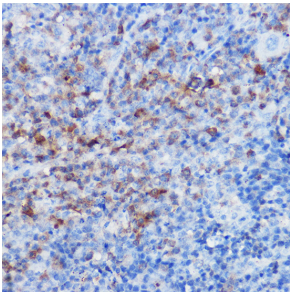
Western blot analysis of extracts of various cell lines, using Anti-CX3CR1 Antibody (A14239) at 1:500 dilution. The secondary antibody was Goat Anti-Rabbit IgG H&L Antibody (HRP) at 1:10,000 dilution. Lysates/proteins were present at 25µg per lane. The blocking buffer used was 3% non-fat dry milk in TBST. Detection was with a ECL Basic Kit. Exposure time: 1s.

Anti-CX3CR1 Antibody (A14239)

Images continued:



Immunohistochemistry analysis of paraffin-embedded human colon carcinoma tissue using Anti-CX3CR1 Antibody (A14239) at a dilution of 1:20 (40x lens). Perform microwave antigen retrieval with 50 mM Tris/EDTA buffer pH 8.0 before commencing with IHC staining protocol.



Immunohistochemistry analysis of paraffin-embedded rat spleen using Anti-CX3CR1 Antibody (A14239) at a dilution of 1:20 (40x lens). Perform microwave antigen retrieval with 50 mM Tris/EDTA buffer pH 8.0 before commencing with IHC staining protocol.