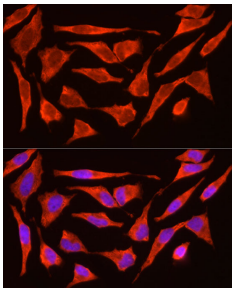


## Anti-ACTH Antibody (A14313)

### Specifications:

Name:	Anti-ACTH Antibody
Description:	Rabbit polyclonal antibody to ACTH.
Applications:	ICC/IF
Recommended Dilutions:	ICC/IF: 1:50-1:200
Reactivity:	Human, Rat
Immunogen:	A synthetic peptide corresponding to a sequence within amino acids 1-100 of human POMC (NP_000930.1).
Sequence:	MPRSCCSRSGALLLALLLQASMEVRGWCLESSQCQDLTTESNLLEECIRACKPDLSAET PMFPGNGDEQPLTENPRKYVMGHFRWDRFGRRNSSSSGSSGA
Host:	Rabbit
Clonality:	Polyclonal
Isotype:	IgG
Conjugate:	Unconjugated
Purification:	Affinity purification.
Product Form:	Liquid
Formulation:	Supplied in Phosphate Buffered Saline, pH 7.3, with 50% Glycerol and 0.05% Proclin 300.
Storage:	Shipped at 4°C. Upon delivery aliquot and store at -20°C. Avoid freeze / thaw cycles.
Disclaimer:	This product is for research use only. It is not intended for diagnostic or therapeutic use.

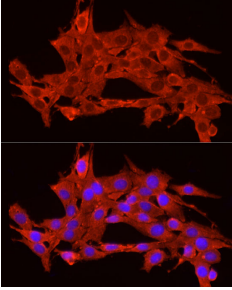
### Images:



Immunofluorescence analysis of HeLa cells using Anti-ACTH Antibody (A14313) at a dilution of 1:200 (40x lens). DAPI was used to stain the cell nuclei (blue).

## Anti-ACTH Antibody (A14313)

Images continued:



Immunofluorescence analysis of PC-12 cells using Anti-ACTH Antibody (A14313) at a dilution of 1:200 (40x lens). DAPI was used to stain the cell nuclei (blue).