

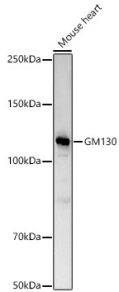
Anti-GM130 Antibody (A14686)

Specifications:

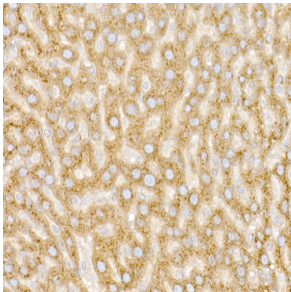
Name:	Anti-GM130 Antibody
Description:	Rabbit polyclonal antibody to GM130.
Applications:	WB, IHC, ICC/IF
Recommended Dilutions:	WB: 1:1,000-1:5,000, IHC: 1:50-1:200, ICC/IF: 1:50-1:200
Reactivity:	Human, Mouse, Rat
Immunogen:	Recombinant fusion protein containing a sequence corresponding to amino acids 20-300 of human GM130 (NP_004477.3).
Sequence:	SKLAAAKKKLREYQQRNSPGVPTGAKKKKKIKNGSNPETTTSGGCHSPEDTPKDNAAT LQPSDDTVLPGGVPSPGASLTSMAASQNHADNVPNLMDETKTFSSSTESLRQLSQQLN GLVCESATCVNGEGPASSANLKDLESRYQQLAVALDSSYVTNKQLNITIEKCLKQQNQE ITDQLEEEKKECHQKQGALREQLQVHIQTIGILVSEKAEQTALAHTQHAARQKEGES EDLASRLQYSRRRVGELERALS AVSTQQKKADRYNKELTKERDALRLEL
Host:	Rabbit
Clonality:	Polyclonal
Isotype:	IgG
Conjugate:	Unconjugated
Purification:	Affinity purification.
Molecular Weight:	130 kDa
Product Form:	Liquid
Formulation:	Supplied in Phosphate Buffered Saline, pH 7.3, with 50% Glycerol and 0.05% Proclin 300.
Storage:	Shipped at 4°C. Upon delivery aliquot and store at -20°C. Avoid freeze / thaw cycles.
Disclaimer:	This product is for research use only. It is not intended for diagnostic or therapeutic use.

Anti-GM130 Antibody (A14686)

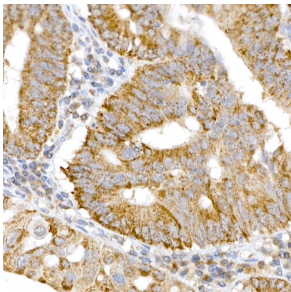
Images:



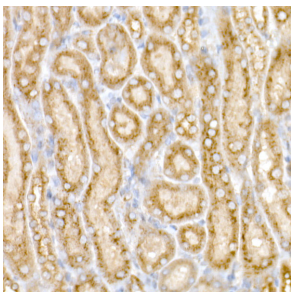
Western blot analysis of Mouse heart, using Anti-GM130 Antibody (A14686) at 1:2,000 dilution. The secondary antibody was Goat Anti-Rabbit IgG H&L Antibody (HRP) at 1:10,000 dilution. Lysates/proteins were present at 25 μ g per lane. The blocking buffer used was 3% non-fat dry milk in TBST. Detection was with a ECL Basic Kit. Exposure time: 60s.



Immunohistochemistry analysis of paraffin-embedded rat liver using Anti-GM130 Antibody (A14686) at a dilution of 1:20 (40x lens). Perform high pressure antigen retrieval with 10 mM citrate buffer pH 6.0 before commencing with IHC staining protocol.



Immunohistochemistry analysis of paraffin-embedded human colon carcinoma tissue using Anti-GM130 Antibody (A14686) at a dilution of 1:20 (40x lens). Perform high pressure antigen retrieval with 10 mM citrate buffer pH 6.0 before commencing with IHC staining protocol.



Immunohistochemistry analysis of paraffin-embedded mouse kidney using Anti-GM130 Antibody (A14686) at a dilution of 1:20 (40x lens). Perform high pressure antigen retrieval with 10 mM citrate buffer pH 6.0 before commencing with IHC staining protocol.