

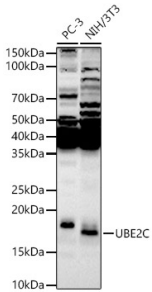
## Anti-UBE2C Antibody (A14807)

### Specifications:

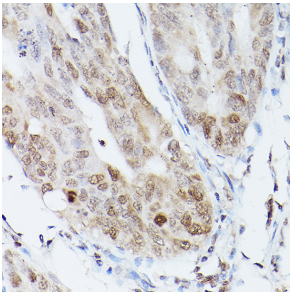
Name:	Anti-UBE2C Antibody
Description:	Rabbit polyclonal antibody to UBE2C.
Applications:	WB, IHC, ICC/IF, IP
Recommended Dilutions:	WB: 1:100-1:500, IHC: 1:50-1:200, ICC/IF: 1:50-1:200, IP: 1:500-1:1,000
Reactivity:	Human, Mouse, Rat
Immunogen:	Recombinant fusion protein containing a sequence corresponding to amino acids 1-179 of human UBE2C (NP_008950.1).
Sequence:	MASQNRDPAATSVAARKGAEPSSGGAARGPVGKRLQQELMTLMMSGDKGISAFPESDN LFWVGTIHGAAAGTVYEDLRYKLSLEFPSGYPYNAPTVMKFLTPCYHPNVDTQGNICLD ILKEKWSALYDVRTILLSIQSLLGEPNIDSPLNTHAAELWKNPTAFKKYLQETYSKQV TSQEP
Host:	Rabbit
Clonality:	Polyclonal
Isotype:	IgG
Conjugate:	Unconjugated
Purification:	Affinity purification.
Molecular Weight:	21 kDa
Product Form:	Liquid
Formulation:	Supplied in Phosphate Buffered Saline, pH 7.3, with 50% Glycerol and 0.01% Thiomersal.
Storage:	Shipped at 4°C. Upon delivery aliquot and store at -20°C. Avoid freeze / thaw cycles.
Disclaimer:	This product is for research use only. It is not intended for diagnostic or therapeutic use.

## Anti-UBE2C Antibody (A14807)

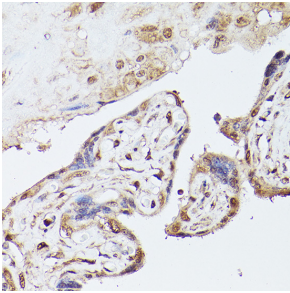
### Images:



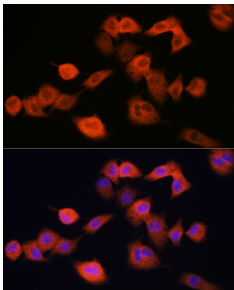
Western blot analysis of various lysates, using Anti-UBE2C Antibody (A14807) at 1:500 dilution. The secondary antibody was Goat Anti-Rabbit IgG H&L Antibody (HRP) at 1:10,000 dilution. Lysates/proteins were present at 25 $\mu$ g per lane. The blocking buffer used was 3% non-fat dry milk in TBST. Detection was with a ECL Enhanced Kit (RM00021). Exposure time: 90s.



Immunohistochemistry analysis of paraffin-embedded human colon carcinoma tissue using Anti-UBE2C Antibody (A14807) at a dilution of 1:50 (40x lens). Perform high pressure antigen retrieval with 10 mM citrate buffer pH 6.0 before commencing with IHC staining protocol.



Immunohistochemistry analysis of paraffin-embedded human placenta using Anti-UBE2C Antibody (A14807) at a dilution of 1:50 (40x lens). Perform high pressure antigen retrieval with 10 mM citrate buffer pH 6.0 before commencing with IHC staining protocol.



Immunofluorescence analysis of A-549 cells using Anti-UBE2C Antibody (A14807) at a dilution of 1:50 (40x lens). DAPI was used to stain the cell nuclei (blue).