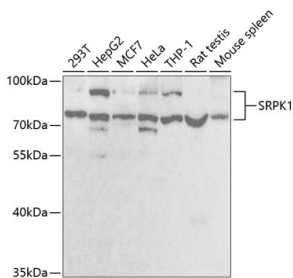


## Anti-SRPK1 Antibody (A15017)

### Specifications:

Name:	Anti-SRPK1 Antibody
Description:	Rabbit polyclonal antibody to SRPK1.
Applications:	WB, IHC, IF
Recommended Dilutions:	WB: 1:500-1:2000, IHC: 1:50-1:200, IF: 1:10-1:100
Reactivity:	Human, Mouse, Rat
Immunogen:	Recombinant fusion protein containing a sequence corresponding to amino acids 290-480 of human SRPK1 (NP_003128.3).
Sequence:	EEMEKESGPGQKRPNKQEESESPVERPLKENPPNKMTQEKLEESSTIGDQQLMERDT EGGAAEINCNGVIEVINYTQNSNNETLRHKEDLHNANDCDVQNLNQESSFLSSQNGDS STSQETDSCPTITSEVSDTMVCQSSSTVGQSFSEQHISQLQESIRAEIPCEDEQEQEHEH NGPLDNKGKSTAGNFLV
Host:	Rabbit
Clonality:	Polyclonal
Isotype:	IgG
Conjugate:	Unconjugated
Purification:	Affinity purification.
Molecular Weight:	74 - 80kDa (Observed MW)
Formulation:	Supplied in Phosphate Buffered Saline, pH 7.30, with 0.02% Sodium Azide and 50% Glycerol.
Storage:	Shipped at 4°C. Upon delivery aliquot and store at -20°C. Avoid freeze / thaw cycles.
Disclaimer:	This product is for research use only. It is not intended for diagnostic or therapeutic use.

### Images:



Western blot analysis of extracts of various cell lines, using Anti-SRPK1 Antibody (A5854) at 1:1,000 dilution.

Secondary antibody: Goat Anti-Rabbit IgG (H+L) (HRP) (AS014) at 1:10,000 dilution.

Lysates / proteins: 25µg per lane.

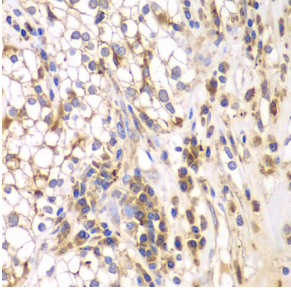
Blocking buffer: 3% non-fat dry milk in TBST.

Detection: ECL Enhanced Kit (RM00021).

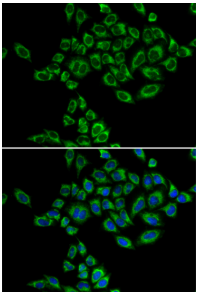
Exposure time: 20s.

## Anti-SRPK1 Antibody (A15017)

Images continued:



Immunohistochemistry of paraffin-embedded human kidney cancer using Anti-SRPK1 Antibody (A5854) at dilution of 1:200 (40x lens).



Immunofluorescence analysis of HeLa cells using Anti-SRPK1 Antibody (A5854). Blue: DAPI for nuclear staining.