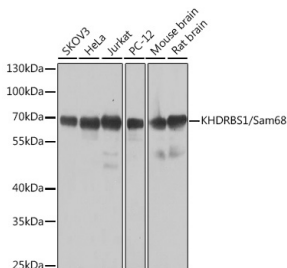


## Anti-SAM68 Antibody (A15072)

### Specifications:

Name:	Anti-SAM68 Antibody
Description:	Rabbit polyclonal antibody to SAM68.
Applications:	WB, IHC, ICC/IF
Recommended Dilutions:	WB: 1:500-1:2,000, IHC: 1:100-1:200, ICC/IF: 1:50-1:200
Reactivity:	Human, Mouse, Rat
Immunogen:	A synthetic peptide corresponding to a sequence within amino acids 300 to the C-terminus of human KHDRBS1/Sam68 (NP_006550.1).
Sequence:	VPRGRGVGPPRGALVRGTPVRGAI TRGATVTRGVPPPPTVRGAPAPRARTAGIQR IPL PPPPAPETYEEYGYDDTYAEQSYEGYEGYYSQSQGDSEYYDYGHGVEVQDSYEAYGQDD WNGTRPSLKAPPARPVKGAYREHPYGRY
Host:	Rabbit
Clonality:	Polyclonal
Isotype:	IgG
Conjugate:	Unconjugated
Purification:	Affinity purification.
Molecular Weight:	68 kDa
Product Form:	Liquid
Formulation:	Supplied in Phosphate Buffered Saline, pH 7.3, with 50% Glycerol and 0.02% Sodium Azide.
Storage:	Shipped at 4°C. Upon delivery aliquot and store at -20°C. Avoid freeze / thaw cycles.
Disclaimer:	This product is for research use only. It is not intended for diagnostic or therapeutic use.

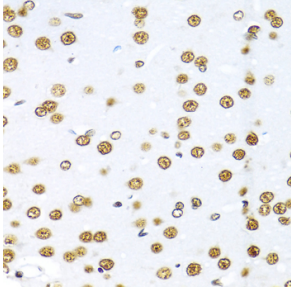
### Images:



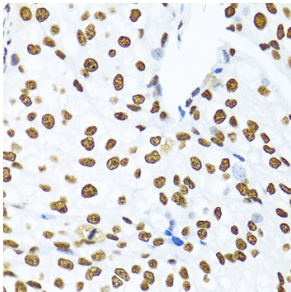
Western blot analysis of extracts of various cell lines, using Anti-SAM68 Antibody (A15072) at 1:1,000 dilution. The secondary antibody was Goat Anti-Rabbit IgG H&L Antibody (HRP) at 1:10,000 dilution. Lysates/proteins were present at 25µg per lane. The blocking buffer used was 3% non-fat dry milk in TBST. Detection was with a ECL Basic Kit. Exposure time: 10s.

## Anti-SAM68 Antibody (A15072)

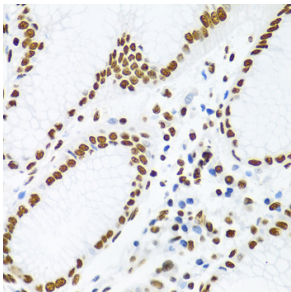
Images continued:



Immunohistochemistry analysis of paraffin-embedded rat brain using Anti-SAM68 Antibody (A15072) at a dilution of 1:100 (40x lens). Perform microwave antigen retrieval with 10 mM PBS buffer pH 7.2 before commencing with IHC staining protocol.



Immunohistochemistry analysis of paraffin-embedded human prostate cancer using Anti-SAM68 Antibody (A15072) at a dilution of 1:100 (40x lens). Perform microwave antigen retrieval with 10 mM PBS buffer pH 7.2 before commencing with IHC staining protocol.



Immunohistochemistry analysis of paraffin-embedded human stomach using Anti-SAM68 Antibody (A15072) at a dilution of 1:100 (40x lens). Perform microwave antigen retrieval with 10 mM PBS buffer pH 7.2 before commencing with IHC staining protocol.