

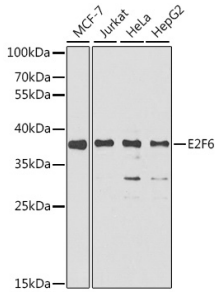
## Anti-E2F6 Antibody (A15091)

### Specifications:

Name:	Anti-E2F6 Antibody
Description:	Rabbit polyclonal antibody to E2F6.
Applications:	WB, IHC, IF, IP, ChIP
Recommended Dilutions:	WB: 1:500-1:2000, IHC: 1:50-1:200, IF: 1:20-1:100, IP: 1:50-1:100, ChIP:: 1:20-1:50
Reactivity:	Human, Mouse
Immunogen:	Recombinant fusion protein containing a sequence corresponding to amino acids 1-281 of human E2F6 (NP_937987.2).
Sequence:	MSQQRPAKRLPSLLLDPTTEETVRRRCRDPINVEGLLPSKIRINLEDNVQYVSMRKALK VKRPRFDVSLVYLTRKFMDLVRSAPGGILDNLKVATKLGVRKRRVYDITNVLDGIDL EKKSKNHIRWIGSDLSNFGAVPQQKKLQEELSDLSAMEDALDELIKDCAQQLFELTDD KENERLAYVTYQDIHSIQAFHEQIVIAVKAPAETRLDVPAPREDSITVHIRSTNGPID VYLCEVEQGQTSNKRSEGVGTSSSESTHPEGPEEEENPQQSEELLEVS
Host:	Rabbit
Clonality:	Polyclonal
Isotype:	IgG
Conjugate:	Unconjugated
Purification:	Affinity purification.
Molecular Weight:	37kDa
Formulation:	Supplied in Phosphate Buffered Saline, pH 7.30, with 0.02% Sodium Azide and 50% Glycerol.
Storage:	Shipped at 4°C. Upon delivery aliquot and store at -20°C. Avoid freeze / thaw cycles.
Disclaimer:	This product is for research use only. It is not intended for diagnostic or therapeutic use.

## Anti-E2F6 Antibody (A15091)

### Images:



Western blot analysis of extracts of various cell lines, using Anti-E2F6 Antibody (A6151) at 1:1,000 dilution.

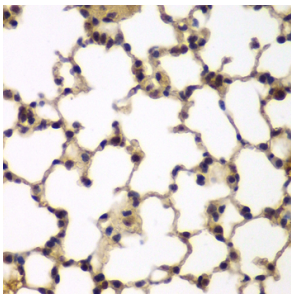
Secondary antibody: Goat Anti-Rabbit IgG (H+L) (HRP) (AS014) at 1:10,000 dilution.

Lysates / proteins: 25µg per lane.

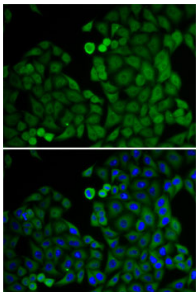
Blocking buffer: 3% non-fat dry milk in TBST.

Detection: ECL Basic Kit (RM00020).

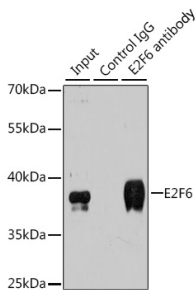
Exposure time: 90s.



Immunohistochemistry of paraffin-embedded mouse lung using Anti-E2F6 Antibody (A6151) at dilution of 1:200 (40x lens).



Immunofluorescence analysis of U2OS cells using Anti-E2F6 Antibody (A6151). Blue: DAPI for nuclear staining.



Immunoprecipitation analysis of 200µg extracts of MCF-7 cells using 3µg Anti-E2F6 Antibody (A6151). Western blot was performed from the immunoprecipitate using Anti-E2F6 Antibody (A6151) at a dilution of 1:500.