

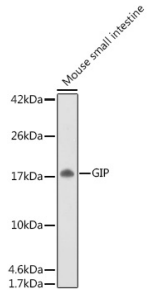
Anti-GIP Antibody (A15118)

Specifications:

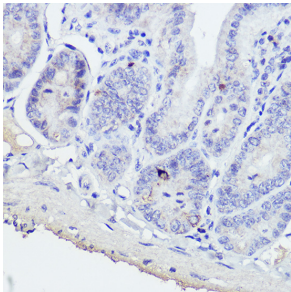
Name:	Anti-GIP Antibody
Description:	Rabbit polyclonal antibody to GIP.
Applications:	WB, IHC
Recommended Dilutions:	WB: 1:100-1:500, IHC: 1:50-1:200
Reactivity:	Human, Mouse, Rat
Immunogen:	Recombinant fusion protein containing a sequence corresponding to amino acids 22-153 of human GIP (NP_004114.1).
Sequence:	EKKEGHFSALPSLPVGS HAKVSSPQPRGPRYAEGTFISDYSIAMDKIHQQDFVNWLLA QKGKKNDWKHNITQREARALELASQANRKEEEAVEPQSSPAKNPSDEDLLRDL LIQEL LACLLDQTNLCRLRSR
Host:	Rabbit
Clonality:	Polyclonal
Isotype:	IgG
Conjugate:	Unconjugated
Purification:	Affinity purification.
Molecular Weight:	17 kDa
Product Form:	Liquid
Formulation:	Supplied in Phosphate Buffered Saline, pH 7.3, with 50% Glycerol and 0.05% Proclin 300.
Storage:	Shipped at 4°C. Upon delivery aliquot and store at -20°C. Avoid freeze / thaw cycles.
Disclaimer:	This product is for research use only. It is not intended for diagnostic or therapeutic use.

Anti-GIP Antibody (A15118)

Images:



Western blot analysis of extracts of Mouse small intestine, using Anti-GIP Antibody (A15118) at 1:500 dilution. The secondary antibody was Goat Anti-Rabbit IgG H&L Antibody (HRP) at 1:10,000 dilution. Lysates/proteins were present at 25 μ g per lane. The blocking buffer used was 3% non-fat dry milk in TBST. Detection was with a ECL Basic Kit. Exposure time: 180s.



Immunohistochemistry analysis of paraffin-embedded mouse intestine using Anti-GIP Antibody (A15118) at a dilution of 1:50 (40x lens). Perform high pressure antigen retrieval with 10 mM citrate buffer pH 6.0 before commencing with IHC staining protocol.