

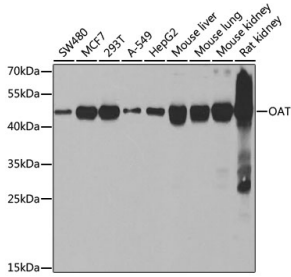
## Anti-ornithine aminotransferase Antibody (A15120)

### Specifications:

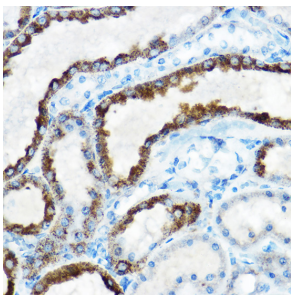
Name:	Anti-ornithine aminotransferase Antibody
Description:	Rabbit polyclonal antibody to ornithine aminotransferase.
Applications:	WB, IHC, IP
Recommended Dilutions:	WB: 1:500-1:2,000, IHC: 1:50-1:200, IP: 1:50-1:100
Reactivity:	Human, Mouse, Rat
Immunogen:	Recombinant fusion protein containing a sequence corresponding to amino acids 160-439 of human OAT (NP_000265.1).
Sequence:	VKGIQKYKAKIVFAAGNFWGRTLSAISSSTDPTSVDGFGPFMPGFDIIPYNDLPALER ALQDPNVAAFMVEPIQGEAGVVVPDPGYLMGVRELCTRHQVLFIADEIQTGLARTGRW LAVDYENVRPDI VLLGKALSGGLYPVSAVLCDDDIMLTIKPGEHGSTYGGNPLGCRVA IAALEVLEEEENLAENADKLGII LRNELMKLP SDVVTA VRGKGLLNAIVIKETKDWDAW KVCLRLRDNGLLAKPTHGDIIRFAPPLVIKEDELRESIEIINKTILSF
Host:	Rabbit
Clonality:	Polyclonal
Isotype:	IgG
Conjugate:	Unconjugated
Purification:	Affinity purification.
Molecular Weight:	47 kDa
Product Form:	Liquid
Formulation:	Supplied in Phosphate Buffered Saline, pH 7.3, with 50% Glycerol and 0.02% Sodium Azide.
Storage:	Shipped at 4°C. Upon delivery aliquot and store at -20°C. Avoid freeze / thaw cycles.
Disclaimer:	This product is for research use only. It is not intended for diagnostic or therapeutic use.

## Anti-ornithine aminotransferase Antibody (A15120)

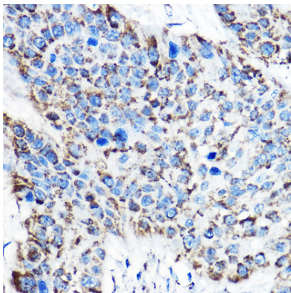
### Images:



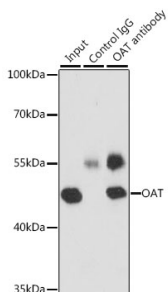
Western blot analysis of extracts of various cell lines, using Anti-ornithine aminotransferase Antibody (A15120) at 1:1,000 dilution. The secondary antibody was Goat Anti-Rabbit IgG H&L Antibody (HRP) at 1:10,000 dilution. Lysates/proteins were present at 25µg per lane. The blocking buffer used was 3% non-fat dry milk in TBST. Detection was with a ECL Basic Kit. Exposure time: 10s.



Immunohistochemistry analysis of paraffin-embedded rat kidney using Anti-ornithine aminotransferase Antibody (A15120) at a dilution of 1:100 (40x lens). Perform high pressure antigen retrieval with 10 mM citrate buffer pH 6.0 before commencing with IHC staining protocol.



Immunohistochemistry analysis of paraffin-embedded human esophageal cancer using Anti-ornithine aminotransferase Antibody (A15120) at a dilution of 1:100 (40x lens). Perform high pressure antigen retrieval with 10 mM citrate buffer pH 6.0 before commencing with IHC staining protocol.



Immunoprecipitation analysis of 200µg extracts of MCF-7 cells using 3µg of Anti-ornithine aminotransferase Antibody (A15120). This Western blot was performed on the immunoprecipitate using Anti-ornithine aminotransferase Antibody (A15120) at a dilution of 1:1000.