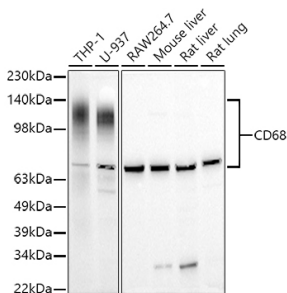


Anti-CD68 Antibody (A15276)

Specifications:

Name:	Anti-CD68 Antibody
Description:	Rabbit polyclonal antibody to CD68.
Applications:	WB, ICC/IF
Recommended Dilutions:	WB: 1:500-1:1,000, ICC/IF: 1:50-1:200
Reactivity:	Human, Mouse, Rat
Immunogen:	Recombinant fusion protein containing a sequence corresponding to amino acids 200-310 of human CD68 (NP_001242.2).
Sequence:	KTKVQGSCEGAHPHLLLSFPYGHLSFGFMQDLQKQVVYLSYMAVEYNVSFPHAAQWTF SAQNASLRDLQAPLGQSFSCSNSSIILSPAVHLDLLSLRLQAAQLPHTGVFGQ
Host:	Rabbit
Clonality:	Polyclonal
Isotype:	IgG
Conjugate:	Unconjugated
Purification:	Affinity purification.
Molecular Weight:	80 - 130 kDa
Product Form:	Liquid
Formulation:	Supplied in Phosphate Buffered Saline, pH 7.3, with 50% Glycerol and 0.05% Proclin 300.
Storage:	Shipped at 4°C. Upon delivery aliquot and store at -20°C. Avoid freeze / thaw cycles.
Disclaimer:	This product is for research use only. It is not intended for diagnostic or therapeutic use.

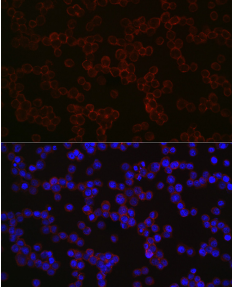
Images:



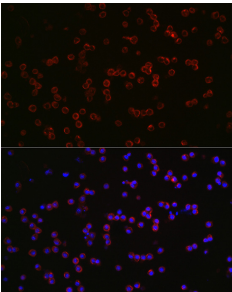
Western blot analysis of extracts of various cell lines, using Anti-CD68 Antibody (A15276) at 1:1,000 dilution. The secondary antibody was Goat Anti-Rabbit IgG H&L Antibody (HRP) at 1:10,000 dilution. Lysates/proteins were present at 25µg per lane. The blocking buffer used was 3% non-fat dry milk in TBST. Detection was with a ECL Basic Kit. Exposure time: 10s.

Anti-CD68 Antibody (A15276)

Images continued:



Immunofluorescence analysis of THP-1 cells using Anti-CD68 Antibody (A15276) at a dilution of 1:250. DAPI was used to stain the cell nuclei (blue).



Immunofluorescence analysis of RAW264.7 cells using Anti-CD68 Antibody (A15276) at a dilution of 1:250. DAPI was used to stain the cell nuclei (blue).