

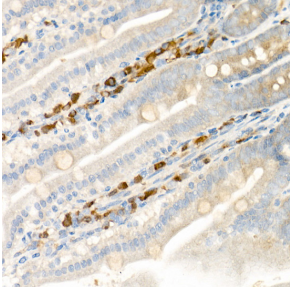
## Anti-15 Lipoxygenase 1 Antibody (A15400)

### Specifications:

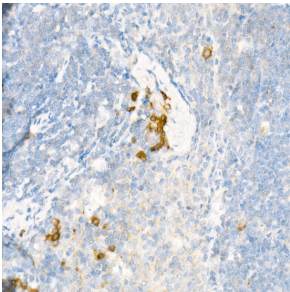
Name:	Anti-15 Lipoxygenase 1 Antibody
Description:	Rabbit polyclonal antibody to 15 Lipoxygenase 1.
Applications:	IHC, ICC/IF
Recommended Dilutions:	IHC: 1:50-1:200, ICC/IF: 1:50-1:200
Reactivity:	Human, Mouse, Rat
Immunogen:	Recombinant fusion protein containing a sequence corresponding to amino acids 1-230 of human ALOX15 (NP_001131.3).
Sequence:	MGLYRIRVSTGASLYAGSNNQVQLWLVGQHGEAALGKRLWPARGKETELKVEVPEYLG PLLFVKLRKRHLLKDDAWFCNWSVQGPAGDEVRFPCYRWVEGNGVLSLPEGTGRTV GEDPQGLFQKHREEELEERRKLYRWGNWKDGLILNMAGAKLYDLPVDERFLEDKRVDV EVSLAKGLADLAIKDSLNLVLTCKWDLDDFNRIWCGQSKLAERVRDSWKEDALFGY
Host:	Rabbit
Clonality:	Polyclonal
Isotype:	IgG
Conjugate:	Unconjugated
Purification:	Affinity purification.
Product Form:	Liquid
Formulation:	Supplied in Phosphate Buffered Saline, pH 7.3, with 50% Glycerol and 0.05% Proclin 300.
Storage:	Shipped at 4°C. Upon delivery aliquot and store at -20°C. Avoid freeze / thaw cycles.
Disclaimer:	This product is for research use only. It is not intended for diagnostic or therapeutic use.

## Anti-15 Lipoxygenase 1 Antibody (A15400)

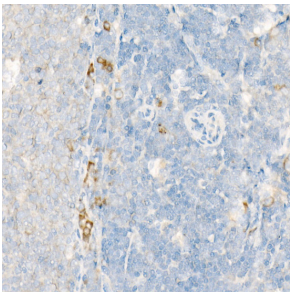
### Images:



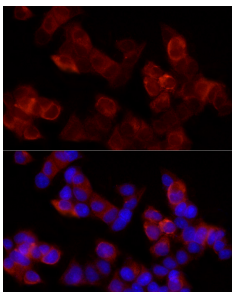
Immunohistochemistry analysis of paraffin-embedded mouse intestine using Anti-15 Lipoxygenase 1 Antibody (A15400) at a dilution of 1:20 (40x lens). Perform high pressure antigen retrieval with 10 mM citrate buffer pH 6.0 before commencing with IHC staining protocol.



Immunohistochemistry analysis of paraffin-embedded mouse spleen using Anti-15 Lipoxygenase 1 Antibody (A15400) at a dilution of 1:20 (40x lens). Perform high pressure antigen retrieval with 10 mM citrate buffer pH 6.0 before commencing with IHC staining protocol.



Immunohistochemistry analysis of paraffin-embedded rat spleen using Anti-15 Lipoxygenase 1 Antibody (A15400) at a dilution of 1:20 (40x lens). Perform high pressure antigen retrieval with 10 mM citrate buffer pH 6.0 before commencing with IHC staining protocol.



Immunofluorescence analysis of MCF7 cells using Anti-15 Lipoxygenase 1 Antibody (A15400) at a dilution of 1:20 (40x lens). DAPI was used to stain the cell nuclei (blue).