

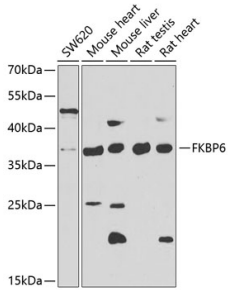
Anti-FKBP6 Antibody (A15485)

Specifications:

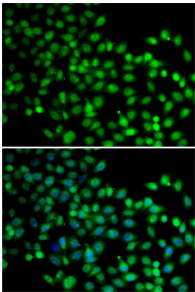
Name:	Anti-FKBP6 Antibody
Description:	Rabbit polyclonal antibody to FKBP6.
Applications:	WB, ICC/IF
Recommended Dilutions:	WB: 1:500-1:2,000, ICC/IF: 1:50-1:100
Reactivity:	Human, Mouse, Rat
Immunogen:	Recombinant fusion protein containing a sequence corresponding to amino acids 1-327 of human FKBP6 (NP_003593.3).
Sequence:	<p>MGGSALNQGVLGDDAPGQSLYERLSQRMLDISGDRGVLKDVIREGAGDLVAPDASVL VKYSGYLEHMDRPFDSNYFRKTPRLMKLGEDITLWGMELGLLSMRRGELARFLFKPNY AYGTLGCPPLIPPNTTVLFEIELLDFLDCAESDKFCALSAEQDQFPLQKVLKVAATE REFGNYLFRQNRFYDAKVRYKRALLLRRRSAPPEEQHLVEAAKLPVLLNLSFTYLKL DRPTIALCYGEQALIIDQKNAKALFRCGQACLLLTEYQKARDFLVRAQKEQPFNHDIN NELKKLASCYRDYVDKEKEMWHRMFAPCGDGSTAGES</p>
Host:	Rabbit
Clonality:	Polyclonal
Isotype:	IgG
Conjugate:	Unconjugated
Purification:	Affinity purification.
Molecular Weight:	37 kDa
Product Form:	Liquid
Formulation:	Supplied in Phosphate Buffered Saline, pH 7.3, with 50% Glycerol and 0.02% Sodium Azide.
Storage:	Shipped at 4°C. Upon delivery aliquot and store at -20°C. Avoid freeze / thaw cycles.
Disclaimer:	This product is for research use only. It is not intended for diagnostic or therapeutic use.

Anti-FKBP6 Antibody (A15485)

Images:



Western blot analysis of extracts of various cell lines, using Anti-FKBP6 Antibody (A15485) at 1:1,000 dilution. The secondary antibody was Goat Anti-Rabbit IgG H&L Antibody (HRP) at 1:10,000 dilution. Lysates/proteins were present at 25 μ g per lane. The blocking buffer used was 3% non-fat dry milk in TBST. Detection was with a ECL Basic Kit. Exposure time: 5s.



Immunofluorescence analysis of A-549 cells using Anti-FKBP6 Antibody (A15485). DAPI was used to stain the cell nuclei (blue).