

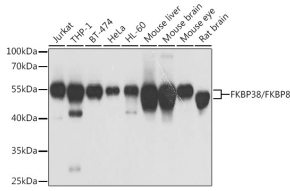
## Anti-FKBP38 Antibody (A15534)

### Specifications:

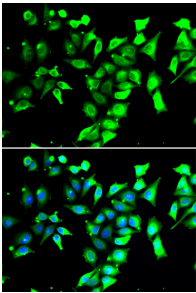
Name:	Anti-FKBP38 Antibody
Description:	Rabbit polyclonal antibody to FKBP38.
Applications:	WB, ICC/IF, IP
Recommended Dilutions:	WB: 1:500-1:2,000, ICC/IF: 1:50-1:100, IP: 1:50-1:200
Reactivity:	Human, Mouse, Rat
Immunogen:	Recombinant fusion protein containing a sequence corresponding to amino acids 60-270 of human FKBP38/FKBP38/FKBP8 (NP_036313.3).
Sequence:	QPPAEEAEQPGALAREFLAAMEPEPAPAPAPEEWLDILGNLLRKKTLVPGPPGSSRP VKGQVTVHLQTSLENGTRVQEEPELVFTLGDCDVIQALDLSVPLMDVGETAMVTADS KYCYGPQGSRSPIPPHAALCLEVTLKTAVDGPDLEMLTGQERVALANRKRECGNAHY QRADFVLAANSYDLAIKAITSSAKVDMTFEEEAQLLQ
Host:	Rabbit
Clonality:	Polyclonal
Isotype:	IgG
Conjugate:	Unconjugated
Purification:	Affinity purification.
Molecular Weight:	55 kDa
Product Form:	Liquid
Formulation:	Supplied in Phosphate Buffered Saline, pH 7.3, with 50% Glycerol and 0.02% Sodium Azide.
Storage:	Shipped at 4°C. Upon delivery aliquot and store at -20°C. Avoid freeze / thaw cycles.
Disclaimer:	This product is for research use only. It is not intended for diagnostic or therapeutic use.

## Anti-FKBP38 Antibody (A15534)

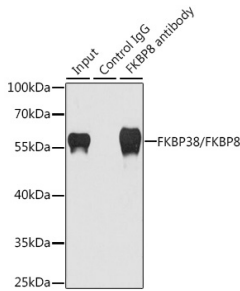
### Images:



Western blot analysis of extracts of various cell lines, using Anti-FKBP38 Antibody (A15534) at 1:1,000 dilution. The secondary antibody was Goat Anti-Rabbit IgG H&L Antibody (HRP) at 1:10,000 dilution. Lysates/proteins were present at 25 $\mu$ g per lane. The blocking buffer used was 3% non-fat dry milk in TBST. Detection was with a ECL Basic Kit. Exposure time: 5s.



Immunofluorescence analysis of A549 cells using Anti-FKBP38 Antibody (A15534). DAPI was used to stain the cell nuclei (blue).



Immunoprecipitation analysis of 200 $\mu$ g extracts of HeLa cells using 1 $\mu$ g of Anti-FKBP38 Antibody (A15534). This Western blot was performed on the immunoprecipitate using Anti-FKBP38 Antibody (A15534) at a dilution of 1:1000.