

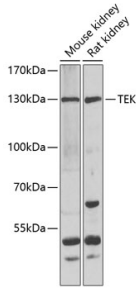
Anti-TEK Antibody (A15604)

Specifications:

Name:	Anti-TEK Antibody
Description:	Rabbit polyclonal antibody to TEK.
Applications:	WB, IHC, IF
Recommended Dilutions:	WB: 1:500-1:2000, IHC: 1:50-1:100, IF: 1:50-1:100
Reactivity:	Human, Mouse, Rat
Immunogen:	Recombinant fusion protein containing a sequence corresponding to amino acids 500-750 of human TEK (NP_000450.2).
Sequence:	EIVTLNYLEPRTEYELCVQLVRRGEGGEGHPGPVRRFTTASIGLPPPRGLNLLPKSQT TLNLTWQPIFPSSDDFYVEVERRSVQKSDQQNIKVPGNLTSVLLNHLHPREQYVVRA RVNTKAQGEWSEDLTAWTSLDILPPQPENIKISNITHSSAVISWTILDGYSISSITIR YKVQGKNEHQHVDVKIKNATITQYQLKGLEPETAYQVDIFAENNIGSSNPAFSHELVT LPESQAPADLGGGKMLLIA
Host:	Rabbit
Clonality:	Polyclonal
Isotype:	IgG
Conjugate:	Unconjugated
Purification:	Affinity purification.
Molecular Weight:	126kDa
Formulation:	Supplied in Phosphate Buffered Saline, pH 7.30, with 0.02% Sodium Azide and 50% Glycerol.
Storage:	Shipped at 4°C. Upon delivery aliquot and store at -20°C. Avoid freeze / thaw cycles.
Disclaimer:	This product is for research use only. It is not intended for diagnostic or therapeutic use.

Anti-TEK Antibody (A15604)

Images:



Western blot analysis of extracts of various cell lines, using Anti-TEK Antibody (A7222) at 1:1,000 dilution.

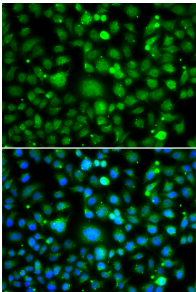
Secondary antibody: Goat Anti-Rabbit IgG (H+L) (HRP) (AS014) at 1:10,000 dilution.

Lysates / proteins: 25µg per lane.

Blocking buffer: 3% non-fat dry milk in TBST.

Detection: ECL Basic Kit (RM00020).

Exposure time: 90s.



Immunofluorescence analysis of MCF-7 cells using Anti-TEK Antibody (A7222). Blue: DAPI for nuclear staining.