

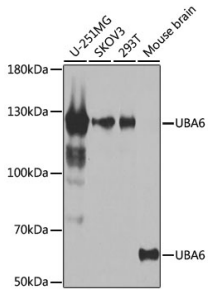
Anti-Uba6 Antibody (A15752)

Specifications:

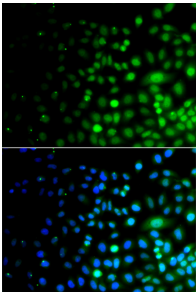
Name:	Anti-Uba6 Antibody
Description:	Rabbit polyclonal antibody to Uba6.
Applications:	WB, ICC/IF, IP
Recommended Dilutions:	WB: 1:500-1:2,000, ICC/IF: 1:50-1:200, IP: 1:50-1:100
Reactivity:	Human, Mouse
Immunogen:	Recombinant fusion protein containing a sequence corresponding to amino acids 1-260 of human UBA6 (NP_060697.4).
Sequence:	MEGSEPVAAHQGEEASCSSWGTGSTNKNLPIMSTASVEIDDALYSRQRYVLGDTAMQK MAKSHVFLSGMGGLGLEIAKNLVLGAIKAVTIHDTEKCAWDLGTNFFLSEDDVVNKR NRAEAVLKHIAELNPYVHVTSSSVPFNETTDLDFDKYQCVVLTEMKLPLQKKINDFC RSQCPPIKFISADVHGIWSRLFCDFGDEFEVLDTTGEEPKEIFISNITQANPGIVTCL ENHPHKLETGQFLTFREINGMTGLNGSI
Host:	Rabbit
Clonality:	Polyclonal
Isotype:	IgG
Conjugate:	Unconjugated
Purification:	Affinity purification.
Molecular Weight:	59 kDa / 118 kDa
Product Form:	Liquid
Formulation:	Supplied in Phosphate Buffered Saline, pH 7.3, with 50% Glycerol and 0.02% Sodium Azide.
Storage:	Shipped at 4°C. Upon delivery aliquot and store at -20°C. Avoid freeze / thaw cycles.
Disclaimer:	This product is for research use only. It is not intended for diagnostic or therapeutic use.

Anti-Uba6 Antibody (A15752)

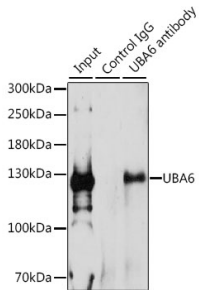
Images:



Western blot analysis of extracts of various cell lines, using Anti-Uba6 Antibody (A15752) at 1:1,000 dilution. The secondary antibody was Goat Anti-Rabbit IgG H&L Antibody (HRP) at 1:10,000 dilution. Lysates/proteins were present at 25 μ g per lane. The blocking buffer used was 3% non-fat dry milk in TBST. Detection was with a ECL Basic Kit. Exposure time: 30s.



Immunofluorescence analysis of A549 cells using Anti-Uba6 Antibody (A15752). DAPI was used to stain the cell nuclei (blue).



Immunoprecipitation analysis of 200 μ g extracts of 293T cells using 3 μ g of Anti-Uba6 Antibody (A15752). This Western blot was performed on the immunoprecipitate using Anti-Uba6 Antibody (A15752) at a dilution of 1:1000.