

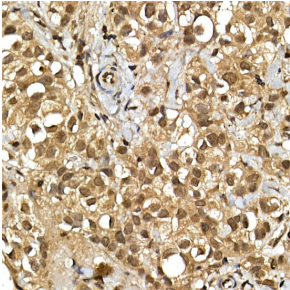
Anti-SQSTM1 / p62 Antibody (A15876)

Specifications:

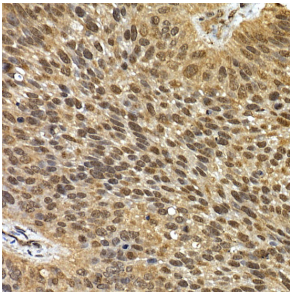
Name:	Anti-SQSTM1 / p62 Antibody
Description:	Rabbit polyclonal antibody to SQSTM1 / p62.
Applications:	IHC
Recommended Dilutions:	IHC: 1:50-1:200
Reactivity:	Human, Mouse, Rat
Immunogen:	Recombinant fusion protein containing a sequence corresponding to amino acids 1-440 of human SQSTM1/p62 (NP_003891.1).
Sequence:	MASLTVKAYLLGKEDAAREIRRFSCCSPEPEAEAEAAAAGPGPCERLLSRVAALFPAL RPGGFQAHYRDEDGDLVAFSSDEELTMAMSYVKDDIFRIYIKEKKECRRDHRPPCAQE APRNMVHPNVICDGCNGPVVGTRYKCSVCPDYDLCSVCEGKGLHRGHTKLAFSPFGH LSEGFSSSRWLRKVKHGHFGWPGWEMGPPGNWSPRPPRAGEARPGPTAESASGPSEDP SVNFLKNVGESVAAALSPLGIEVDIDVEHGGKRSRLTPVSPESSTEELKSSSQPSSCC SDPSKPGGNVEGATQSLAEQMRKIALESEGRPEEQMESDNCSSGGDDWTHLSSKEVDP STGELQSLQMPESSEGLDPSQEGPTGLKEAALYPHLPPEADPRLIESLSQMLSMGF SDEGGWLTRLLQTKNYDIGAALDTIQYSKHPPPL
Host:	Rabbit
Clonality:	Polyclonal
Isotype:	IgG
Conjugate:	Unconjugated
Purification:	Affinity purification.
Product Form:	Liquid
Formulation:	Supplied in Phosphate Buffered Saline, pH 7.3, with 50% Glycerol and 0.05% Proclin 300.
Storage:	Shipped at 4°C. Upon delivery aliquot and store at -20°C. Avoid freeze / thaw cycles.
Disclaimer:	This product is for research use only. It is not intended for diagnostic or therapeutic use.

Anti-SQSTM1 / p62 Antibody (A15876)

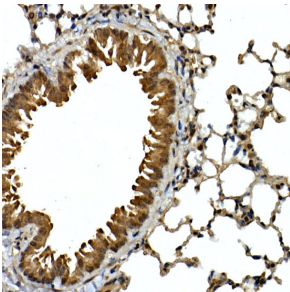
Images:



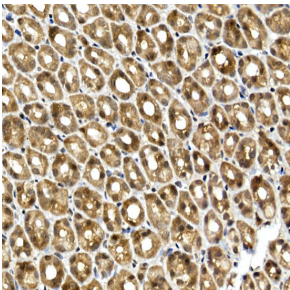
Immunohistochemistry analysis of paraffin-embedded human breast cancer tissue using Anti-SQSTM1 / p62 Antibody (A15876) at a dilution of 1:100 (40x lens). Perform high pressure antigen retrieval with 10 mM citrate buffer pH 6.0 before commencing with IHC staining protocol.



Immunohistochemistry analysis of paraffin-embedded human lung cancer using Anti-SQSTM1 / p62 Antibody (A15876) at a dilution of 1:100 (40x lens). Perform high pressure antigen retrieval with 10 mM citrate buffer pH 6.0 before commencing with IHC staining protocol.



Immunohistochemistry analysis of paraffin-embedded mouse lung using Anti-SQSTM1 / p62 Antibody (A15876) at a dilution of 1:100 (40x lens). Perform high pressure antigen retrieval with 10 mM citrate buffer pH 6.0 before commencing with IHC staining protocol.



Immunohistochemistry analysis of paraffin-embedded rat stomach using Anti-SQSTM1 / p62 Antibody (A15876) at a dilution of 1:100 (40x lens). Perform high pressure antigen retrieval with 10 mM citrate buffer pH 6.0 before commencing with IHC staining protocol.