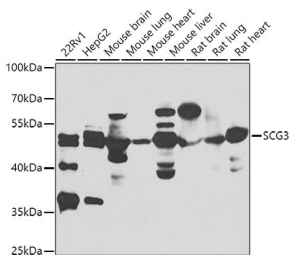


Anti-SCG3 Antibody (A15903)

Specifications:

| | |
|------------------------|---|
| Name: | Anti-SCG3 Antibody |
| Description: | Rabbit polyclonal antibody to SCG3. |
| Applications: | WB, IHC |
| Recommended Dilutions: | WB: 1:500-1:2000, IHC: 1:50-1:200 |
| Reactivity: | Human, Mouse, Rat |
| Immunogen: | Recombinant fusion protein containing a sequence corresponding to amino acids 199-468 of human SCG3 (NP_037375.2). |
| Sequence: | KLISKEANNYEEDPNKPTSWTENQAGKIPEKVTPMAAIQDGLAKGENDETVSNTLTLT NGLERRTKTYSEDNFEELQYFPNFYALLKSIDSEKEAKEKETLITIMKTLIDFVKMMV KYGTISPEEGVSYLENLDEMIALQTKNKLEKNATDNISKLFAPSEKSHEETDSTKEE AAKMEKEYGSLKDKSTKDDNSNPGGKTDEPKGKTEAYLEAIRKNIEWLKKHDKKGNKED YDLKMRDFINKQADAYVEKGIKDKEEAEAIKRIYSSL |
| Host: | Rabbit |
| Clonality: | Polyclonal |
| Isotype: | IgG |
| Conjugate: | Unconjugated |
| Purification: | Affinity purification. |
| Molecular Weight: | 53kDa |
| Formulation: | Supplied in Phosphate Buffered Saline, pH 7.30, with 0.02% Sodium Azide and 50% Glycerol. |
| Storage: | Shipped at 4°C. Upon delivery aliquot and store at -20°C. Avoid freeze / thaw cycles. |
| Disclaimer: | This product is for research use only. It is not intended for diagnostic or therapeutic use. |

Images:



Western blot analysis of extracts of various cell lines, using Anti-SCG3 Antibody (A7799) at 1:1,000 dilution.

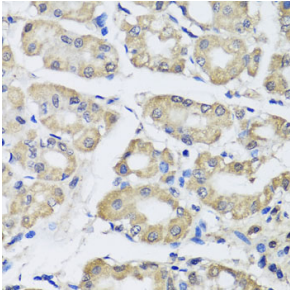
Secondary antibody: Goat Anti-Rabbit IgG (H+L) (HRP) (AS014) at 1:10,000 dilution.

Lysates / proteins: 25µg per lane.

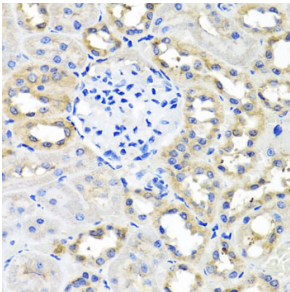
Blocking buffer: 3% non-fat dry milk in TBST.

Anti-SCG3 Antibody (A15903)

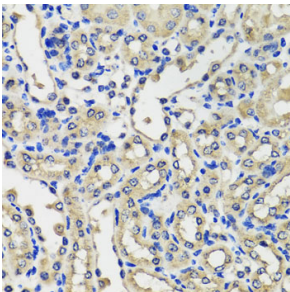
Images continued:



Immunohistochemistry of paraffin-embedded human stomach using Anti-SCG3 Antibody (A7799) at dilution of 1:100 (40x lens).



Immunohistochemistry of paraffin-embedded rat kidney using Anti-SCG3 Antibody (A7799) at dilution of 1:100 (40x lens).



Immunohistochemistry of paraffin-embedded mouse kidney using Anti-SCG3 Antibody (A7799) at dilution of 1:100 (40x lens).