

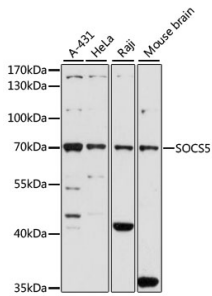
## Anti-SOCS5 Antibody (A16000)

### Specifications:

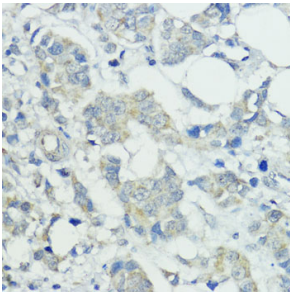
|                        |   |
|------------------------|---|
| Name:                  | Anti-SOCS5 Antibody   |
| Description:           | Rabbit polyclonal antibody to SOCS5.  |
| Applications:          | WB, IHC, ICC/IF   |
| Recommended Dilutions: | WB: 1:500-1:2,000, IHC: 1:50-1:200, ICC/IF: 1:50-1:200  |
| Reactivity:            | Human, Mouse  |
| Immunogen:             | Recombinant fusion protein containing a sequence corresponding to amino acids 1-140 of human SOCS5 (NP_054730.1).                                     |
| Sequence:              | MDKVGKMWNNFKYRCQNLFGHEGGSRSSENVDMNSNRCLSVKEKNISIGDSTPQQQSSP<br>LRENIALQLGLSPSKNSSRRNQNCATEIPQIVEISIEKDNDSCVTPGTRLARRDSYSR<br>HAPWGGKKKHSCSTKTQSSLDADK |
| Host:                  | Rabbit  |
| Clonality:             | Polyclonal  |
| Isotype:               | IgG   |
| Conjugate:             | Unconjugated  |
| Purification:          | Affinity purification.  |
| Molecular Weight:      | 70 kDa  |
| Product Form:          | Liquid  |
| Formulation:           | Supplied in Phosphate Buffered Saline, pH 7.3, with 50% Glycerol and 0.01% Thiomersal.  |
| Storage:               | Shipped at 4°C. Upon delivery aliquot and store at -20°C. Avoid freeze / thaw cycles.   |
| Disclaimer:            | This product is for research use only. It is not intended for diagnostic or therapeutic use.  |

## Anti-SOCS5 Antibody (A16000)

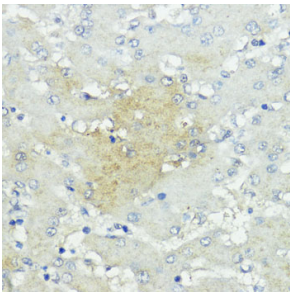
### Images:



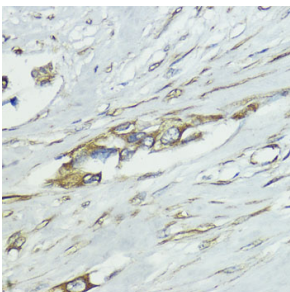
Western blot analysis of extracts of various cell lines, using Anti-SOCS5 Antibody (A16000) at 1:1,000 dilution. The secondary antibody was Goat Anti-Rabbit IgG H&L Antibody (HRP) at 1:10,000 dilution. Lysates/proteins were present at 25 $\mu$ g per lane. The blocking buffer used was 3% non-fat dry milk in TBST. Detection was with a ECL Basic Kit. Exposure time: 60s.



Immunohistochemistry analysis of paraffin-embedded human mammary cancer using Anti-SOCS5 Antibody (A16000) at a dilution of 1:100 (40x lens). Perform microwave antigen retrieval with 10 mM PBS buffer pH 7.2 before commencing with IHC staining protocol.



Immunohistochemistry analysis of paraffin-embedded human liver cancer using Anti-SOCS5 Antibody (A16000) at a dilution of 1:100 (40x lens). Perform microwave antigen retrieval with 10 mM PBS buffer pH 7.2 before commencing with IHC staining protocol.



Immunohistochemistry analysis of paraffin-embedded human lung cancer using Anti-SOCS5 Antibody (A16000) at a dilution of 1:100 (40x lens). Perform microwave antigen retrieval with 10 mM PBS buffer pH 7.2 before commencing with IHC staining protocol.