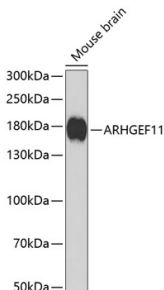


Anti-PDZ-RhoGEF Antibody (A16002)

Specifications:

Name:	Anti-PDZ-RhoGEF Antibody
Description:	Rabbit polyclonal antibody to PDZ-RhoGEF.
Applications:	WB, IHC
Recommended Dilutions:	WB: 1:500-1:2,000, IHC: 1:50-1:100
Reactivity:	Human, Mouse
Immunogen:	A synthetic peptide corresponding to a sequence within amino acids 1-100 of human ARHGEF11 (O15085).
Sequence:	MSVRLPQSIDRLSSLSSLGDSAPERKSPSHHRQPDASETTGLVQRCVIIQKDQHGFG FTVSGDRIVLVQSVRPGGAAMKAGVKEGDRIIKVNGTMVTNS
Host:	Rabbit
Clonality:	Polyclonal
Isotype:	IgG
Conjugate:	Unconjugated
Purification:	Affinity purification.
Molecular Weight:	168 kDa
Product Form:	Liquid
Formulation:	Supplied in Phosphate Buffered Saline, pH 7.3, with 50% Glycerol and 0.02% Sodium Azide.
Storage:	Shipped at 4°C. Upon delivery aliquot and store at -20°C. Avoid freeze / thaw cycles.
Disclaimer:	This product is for research use only. It is not intended for diagnostic or therapeutic use.

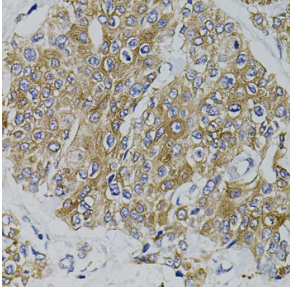
Images:



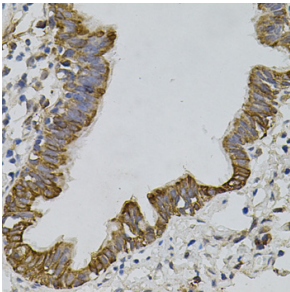
Western blot analysis of extracts of mouse brain, using Anti-PDZ-RhoGEF Antibody (A16002) at 1:1,000 dilution. The secondary antibody was Goat Anti-Rabbit IgG H&L Antibody (HRP) at 1:10,000 dilution. Lysates/proteins were present at 25µg per lane. The blocking buffer used was 3% non-fat dry milk in TBST. Detection was with a ECL Basic Kit. Exposure time: 90s.

Anti-PDZ-RhoGEF Antibody (A16002)

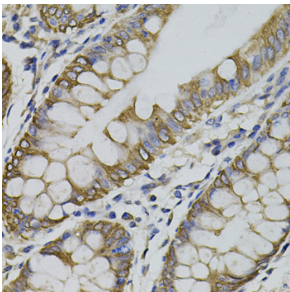
Images continued:



Immunohistochemistry analysis of paraffin-embedded human prostate cancer using Anti-PDZ-RhoGEF Antibody (A16002) (40x lens).



Immunohistochemistry analysis of paraffin-embedded human lung using Anti-PDZ-RhoGEF Antibody (A16002) (40x lens).



Immunohistochemistry analysis of paraffin-embedded human colon tissue using Anti-PDZ-RhoGEF Antibody (A16002) (40x lens).