

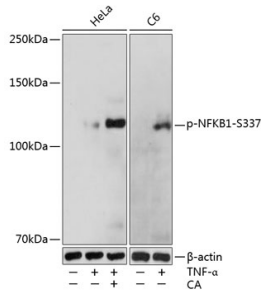
Anti-NFkB p105 / p50 (phospho Ser337) Antibody (A16454)

Specifications:

Name:	Anti-NFkB p105 / p50 (phospho Ser337) Antibody
Description:	Rabbit polyclonal antibody to NFkB p105 / p50 (phospho Ser337).
Applications:	WB
Recommended Dilutions:	WB: 1:500-1:2,000
Reactivity:	Human, Mouse, Rat
Immunogen:	A synthetic phosphorylated peptide around S337 of human NFkB1 (NP_001158884.1).
Sequence:	RKSDL
Host:	Rabbit
Clonality:	Polyclonal
Isotype:	IgG
Conjugate:	Unconjugated
Purification:	Affinity purification.
Molecular Weight:	120 kDa
Product Form:	Liquid
Formulation:	Supplied in Phosphate Buffered Saline, pH 7.3, with 50% Glycerol and 0.01% Thiomersal.
Storage:	Shipped at 4°C. Upon delivery aliquot and store at -20°C. Avoid freeze / thaw cycles.
Disclaimer:	This product is for research use only. It is not intended for diagnostic or therapeutic use.

Anti-NFkB p105 / p50 (phospho Ser337) Antibody (A16454)

Images:



Western blot analysis of extracts of various cell lines, using Anti-NFkB p105 / p50 (phospho Ser337) Antibody (A16454) at 1:1,000 dilution. HeLa cells were treated by TNF-alpha (20 ng/ml) and Calyculin A (100 nM) at 37°C for 10 minutes. C6 cells were treated by TNF-alpha (20 ng/ml) at 37°C for 10 minutes. The secondary antibody was Goat Anti-Rabbit IgG H&L Antibody (HRP) at 1:10,000 dilution. Lysates/proteins were present at 25µg per lane. The blocking buffer used was 3% non-fat dry milk in TBST. Detection was with a ECL Basic Kit. Exposure time: 1s.