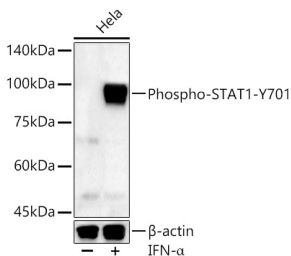


## Anti-STAT1 (phospho Tyr701) Antibody (A16463)

### Specifications:

Name:	Anti-STAT1 (phospho Tyr701) Antibody
Description:	Rabbit polyclonal antibody to STAT1 (phospho Tyr701).
Applications:	WB, IHC
Recommended Dilutions:	WB: 1:500-1:1,000, IHC: 1:50-1:200
Reactivity:	Human, Mouse, Rat
Immunogen:	A synthetic phosphorylated peptide around Y701 of human STAT1 (NP_009330.1).
Sequence:	TGYIK
Host:	Rabbit
Clonality:	Polyclonal
Isotype:	IgG
Conjugate:	Unconjugated
Purification:	Affinity purification.
Molecular Weight:	84 kDa / 91 kDa
Product Form:	Liquid
Formulation:	Supplied in Phosphate Buffered Saline, pH 7.3, with 50% Glycerol and 0.01% Thiomersal.
Storage:	Shipped at 4°C. Upon delivery aliquot and store at -20°C. Avoid freeze / thaw cycles.
Disclaimer:	This product is for research use only. It is not intended for diagnostic or therapeutic use.

### Images:



Western blot analysis of extracts of HeLa cells, using Anti-STAT1 (phospho Tyr701) Antibody (A16463) at 1:1,000 dilution. HeLa cells were treated by IFN-alpha (100 ng/ml) at 37°C for 30 minutes after serum-starvation overnight. The secondary antibody was Goat Anti-Rabbit IgG H&L Antibody (HRP) at 1:10,000 dilution. Lysates/proteins were present at 25µg per lane. The blocking buffer used was 3% non-fat dry milk in TBST. Detection was with a ECL Enhanced Kit (RM00021). Exposure time: 180s.