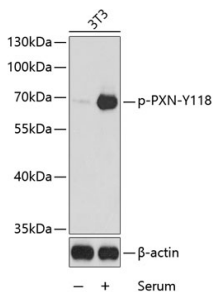


Anti-Paxillin (phospho Tyr118) Antibody (A16479)

Specifications:

Name:	Anti-Paxillin (phospho Tyr118) Antibody
Description:	Rabbit polyclonal antibody to Paxillin (phospho Tyr118).
Applications:	WB, IHC
Recommended Dilutions:	WB: 1:500-1:2,000, IHC: 1:50-1:100
Reactivity:	Human, Mouse, Rat
Immunogen:	A synthetic phosphorylated peptide around Y118 of human Paxillin (NP_001074324.1).
Sequence:	HVYSF
Host:	Rabbit
Clonality:	Polyclonal
Isotype:	IgG
Conjugate:	Unconjugated
Purification:	Affinity purification.
Molecular Weight:	70 kDa
Product Form:	Liquid
Formulation:	Supplied in Phosphate Buffered Saline, pH 7.3, with 50% Glycerol and 0.01% Thiomersal.
Storage:	Shipped at 4°C. Upon delivery aliquot and store at -20°C. Avoid freeze / thaw cycles.
Disclaimer:	This product is for research use only. It is not intended for diagnostic or therapeutic use.

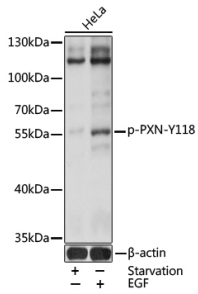
Images:



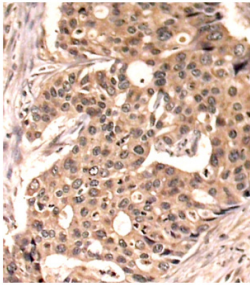
Western blot analysis of extracts from 3T3 cells, using Anti-Paxillin (phospho Tyr118) Antibody (A16479). The secondary antibody was Goat Anti-Rabbit IgG H&L Antibody (HRP) at 1:10,000 dilution. Lysates/proteins were present at 25µg per lane. The blocking buffer used was 3% BSA.

Anti-Paxillin (phospho Tyr118) Antibody (A16479)

Images continued:



Western blot analysis of extracts of HeLa cells, using Anti-Paxillin (phospho Tyr118) Antibody (A16479) at 1:2,000 dilution. HeLa cells were treated by EGF (100ng/ml) for 30 minutes after serum-starvation overnight. The secondary antibody was Goat Anti-Rabbit IgG H&L Antibody (HRP) at 1:10,000 dilution. Lysates/proteins were present at 25µg per lane. The blocking buffer used was 3% BSA. Detection was with a ECL Basic Kit. Exposure time: 30s.



Immunohistochemistry analysis of paraffin-embedded human breast carcinoma tissue using Anti-Paxillin (phospho Tyr118) Antibody (A16479).