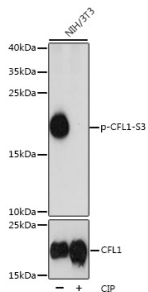


## Anti-Cofilin (phospho Ser3) Antibody (A16495)

### Specifications:

Name:	Anti-Cofilin (phospho Ser3) Antibody
Description:	Rabbit polyclonal antibody to Cofilin (phospho Ser3).
Applications:	WB, IHC, ICC/IF
Recommended Dilutions:	WB: 1:500-1:2,000, IHC: 1:50-1:100, ICC/IF: 1:100-1:200
Reactivity:	Human, Mouse, Rat
Immunogen:	A synthetic phosphorylated peptide around S3 of human CFL1 (NP_005498.1).
Sequence:	MASGV
Host:	Rabbit
Clonality:	Polyclonal
Isotype:	IgG
Conjugate:	Unconjugated
Purification:	Affinity purification.
Molecular Weight:	18 kDa
Product Form:	Liquid
Formulation:	Supplied in Phosphate Buffered Saline, pH 7.3, with 50% Glycerol and 0.01% Thiomersal.
Storage:	Shipped at 4°C. Upon delivery aliquot and store at -20°C. Avoid freeze / thaw cycles.
Disclaimer:	This product is for research use only. It is not intended for diagnostic or therapeutic use.

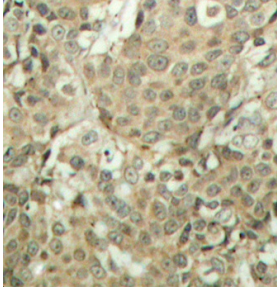
### Images:



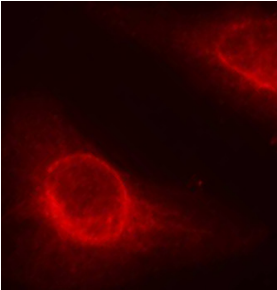
Western blot analysis of extracts of NIH/3T3 cells, using Anti-Cofilin (phospho Ser3) Antibody (A16495) at 1:1,000 dilution or CFL1 antibody (A1704). NIH/3T3 cells were treated by CIP(20uL/400ul) at 37°C for 1 hour. The secondary antibody was Goat Anti-Rabbit IgG H&L Antibody (HRP) at 1:10,000 dilution. Lysates/proteins were present at 25µg per lane. The blocking buffer used was 3% BSA. Detection was with a ECL Basic Kit. Exposure time: 3s.

## Anti-Cofilin (phospho Ser3) Antibody (A16495)

Images continued:



Immunohistochemistry analysis of paraffin-embedded human breast carcinoma tissue using Anti-Cofilin (phospho Ser3) Antibody (A16495). Perform microwave antigen retrieval with 10 mM Tris/EDTA buffer pH 9.0 before commencing with IHC staining protocol.



Immunofluorescence analysis of methanol-fixed HeLa cells using Anti-Cofilin (phospho Ser3) Antibody (A16495).