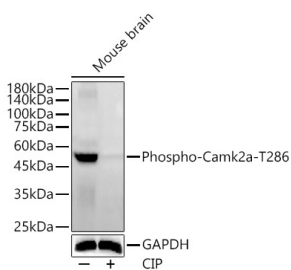


Anti-CaMKII alpha (phospho Thr286) Antibody (A16547)

Specifications:

Name:	Anti-CaMKII alpha (phospho Thr286) Antibody
Description:	Rabbit polyclonal antibody to CaMKII alpha (phospho Thr286).
Applications:	WB
Recommended Dilutions:	WB: 1:2,000-1:4,000
Reactivity:	Human, Mouse, Rat
Immunogen:	A synthetic phosphorylated peptide around T286 of human Camk2a (NP_741960.1).
Sequence:	QETVD
Host:	Rabbit
Clonality:	Polyclonal
Isotype:	IgG
Conjugate:	Unconjugated
Purification:	Affinity purification.
Molecular Weight:	50 kDa
Product Form:	Liquid
Formulation:	Supplied in Phosphate Buffered Saline, pH 7.3, with 50% Glycerol and 0.05% Proclin 300.
Storage:	Shipped at 4°C. Upon delivery aliquot and store at -20°C. Avoid freeze / thaw cycles.
Disclaimer:	This product is for research use only. It is not intended for diagnostic or therapeutic use.

Images:



Western blot analysis of Mouse brain, using Anti-CaMKII alpha (phospho Thr286) Antibody (A16547) at 1:4,000 dilution. Mouse brain cells were treated by CIP(20uL/400ul) at 37°C for 1 hour. The secondary antibody was Goat Anti-Rabbit IgG H&L Antibody (HRP) at 1:10,000 dilution. Lysates/proteins were present at 25µg per lane. The blocking buffer used was 3% non-fat dry milk in TBST. Detection was with a ECL Basic Kit. Exposure time: 30s.