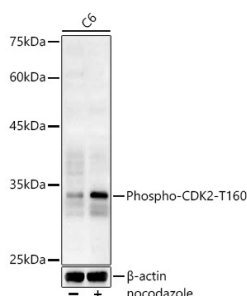


Anti-CDK2 (phospho Thr160) Antibody (A16579)

Specifications:

Name:	Anti-CDK2 (phospho Thr160) Antibody
Description:	Rabbit polyclonal antibody to CDK2 (phospho Thr160).
Applications:	WB, IHC
Recommended Dilutions:	WB: 1:100-1:500, IHC: 1:50-1:100
Reactivity:	Human, Mouse, Rat
Immunogen:	A synthetic phosphorylated peptide around T160 of human CDK2 (NP_001789.2?/NP_001249.1).
Sequence:	TYTHE
Host:	Rabbit
Clonality:	Polyclonal
Isotype:	IgG
Conjugate:	Unconjugated
Purification:	Affinity purification.
Molecular Weight:	42 kDa
Product Form:	Liquid
Formulation:	Supplied in Phosphate Buffered Saline, pH 7.3, with 50% Glycerol and 0.05% Proclin 300.
Storage:	Shipped at 4°C. Upon delivery aliquot and store at -20°C. Avoid freeze / thaw cycles.
Disclaimer:	This product is for research use only. It is not intended for diagnostic or therapeutic use.

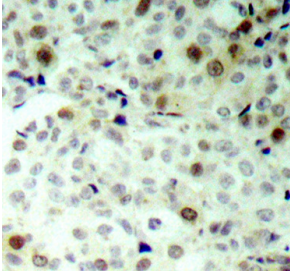
Images:



Western blot analysis of C6, using Anti-CDK2 (phospho Thr160) Antibody (A16579) at 1:400 dilution. The secondary antibody was Goat Anti-Rabbit IgG H&L Antibody (HRP) at 1:10,000 dilution. Lysates/proteins were present at 25µg per lane. The blocking buffer used was 3% non-fat dry milk in TBST. Detection was with a ECL Basic Kit. Exposure time: 90s.

Anti-CDK2 (phospho Thr160) Antibody (A16579)

Images continued:



Immunohistochemistry analysis of paraffin-embedded human breast carcinoma tissue using Anti-CDK2 (phospho Thr160) Antibody (A16579). Perform microwave antigen retrieval with 10 mM Tris/EDTA buffer pH 9.0 before commencing with IHC staining protocol.