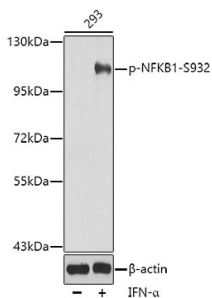


Anti-NFkB p105 / p50 (phospho Ser932) Antibody (A16639)

Specifications:

Name:	Anti-NFkB p105 / p50 (phospho Ser932) Antibody
Description:	Rabbit polyclonal antibody to NFkB p105 / p50 (phospho Ser932).
Applications:	WB, IHC
Recommended Dilutions:	WB: 1:500-1:2,000, IHC: 1:50-1:100
Reactivity:	Human, Mouse, Rat
Immunogen:	A phospho specific peptide corresponding to residues surrounding S932 of human NFkB1.
Host:	Rabbit
Clonality:	Polyclonal
Isotype:	IgG
Conjugate:	Unconjugated
Purification:	Affinity purification.
Molecular Weight:	105 kDa
Product Form:	Liquid
Formulation:	Supplied in Phosphate Buffered Saline, pH 7.3, with 50% Glycerol and 0.02% Sodium Azide.
Storage:	Shipped at 4°C. Upon delivery aliquot and store at -20°C. Avoid freeze / thaw cycles.
Disclaimer:	This product is for research use only. It is not intended for diagnostic or therapeutic use.

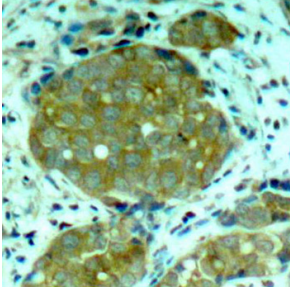
Images:



Western blot analysis of extracts from 293 cells untreated or treated with TNF- α using Anti-NFkB p105 / p50 (phospho Ser932) Antibody (A16639). The secondary antibody was Goat Anti-Rabbit IgG H&L Antibody (HRP) at 1:10,000 dilution. Lysates/proteins were present at 25 μ g per lane. The blocking buffer used was 3% BSA.

Anti-NFkB p105 / p50 (phospho Ser932) Antibody (A16639)

Images continued:



Immunohistochemistry analysis of paraffin-embedded human breast carcinoma tissue using Anti-NFkB p105 / p50 (phospho Ser932) Antibody (A16639).