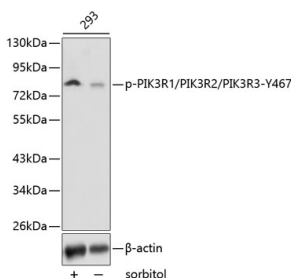


## Anti-PI 3 Kinase p85 alpha + PI 3 Kinase p55 gamma + PI 3 Kinase p85 beta (phospho Tyr467 + Tyr464 + Tyr199) Antibody (A16649)

### Specifications:

Name:	Anti-PI 3 Kinase p85 alpha + PI 3 Kinase p55 gamma + PI 3 Kinase p85 beta (phospho Tyr467 + Tyr464 + Tyr199) Antibody
Description:	Rabbit polyclonal antibody to PI 3 Kinase p85 alpha + PI 3 Kinase p55 gamma + PI 3 Kinase p85 beta (phospho Tyr467 + Tyr464 + Tyr199).
Applications:	WB
Recommended Dilutions:	WB: 1:500-1:1,000
Reactivity:	Human, Mouse, Rat
Immunogen:	A phospho specific peptide corresponding to residues surrounding Y467 of human PIK3R1/2/3.
Host:	Rabbit
Clonality:	Polyclonal
Isotype:	IgG
Conjugate:	Unconjugated
Purification:	Affinity purification.
Molecular Weight:	85 kDa
Product Form:	Liquid
Formulation:	Supplied in Phosphate Buffered Saline, pH 7.3, with 50% Glycerol and 0.02% Sodium Azide.
Storage:	Shipped at 4°C. Upon delivery aliquot and store at -20°C. Avoid freeze / thaw cycles.
Disclaimer:	This product is for research use only. It is not intended for diagnostic or therapeutic use.

### Images:



Western blot analysis of extracts from 293 cells, using Anti-PI 3 Kinase p85 alpha + PI 3 Kinase p55 gamma + PI 3 Kinase p85 beta (phospho Tyr467 + Tyr464 + Tyr199) Antibody (A16649). The secondary antibody was Goat Anti-Rabbit IgG H&L Antibody (HRP) at 1:10,000 dilution. Lysates/proteins were present at 25µg per lane. The blocking buffer used was 3% BSA.