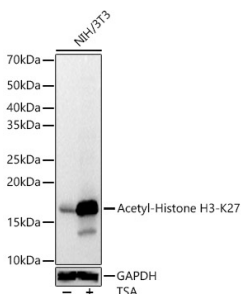


## Anti-Histone H3 (acetyl Lys27) Antibody (A16739)

### Specifications:

Name:	Anti-Histone H3 (acetyl Lys27) Antibody
Description:	Rabbit polyclonal antibody to Histone H3 (acetyl Lys27).
Applications:	WB, IHC, ICC/IF, IP, ChIP, ChIP-seq
Recommended Dilutions:	WB: 1:1,000-1:5,000, IHC: 1:50-1:200, ICC/IF: 1:50-1:200, IP: 1:50-1:200, ChIP: 1:20-1:100, ChIP-seq: 1:20-1:100
Reactivity:	Human, Mouse, Rat
Immunogen:	A synthetic acetylated peptide around K27 of human Histone H3 (NP_003520.1).
Sequence:	AARKS
Host:	Rabbit
Clonality:	Polyclonal
Isotype:	IgG
Conjugate:	Unconjugated
Purification:	Affinity purification.
Molecular Weight:	17 kDa
Product Form:	Liquid
Formulation:	Supplied in Phosphate Buffered Saline, pH 7.3, with 50% Glycerol and 0.05% Proclin 300.
Storage:	Shipped at 4°C. Upon delivery aliquot and store at -20°C. Avoid freeze / thaw cycles.
Disclaimer:	This product is for research use only. It is not intended for diagnostic or therapeutic use.

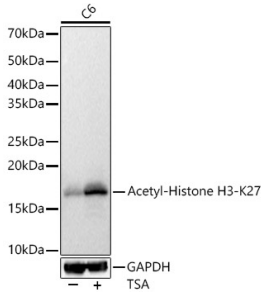
### Images:



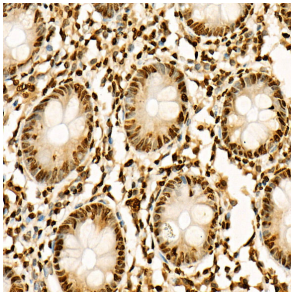
Western blot analysis of NIH/3T3, using Anti-Histone H3 (acetyl Lys27) Antibody (A16739) at 1:2,000 dilution. NIH/3T3 cells were treated by TSA (1  $\mu$ M) at 37°C for 18 hours. The secondary antibody was Goat Anti-Rabbit IgG H&L Antibody (HRP) at 1:10,000 dilution. Lysates/proteins were present at 25 $\mu$ g per lane. The blocking buffer used was 3% non-fat dry milk in TBST. Detection was with a ECL Basic Kit. Exposure time: 1s.

## Anti-Histone H3 (acetyl Lys27) Antibody (A16739)

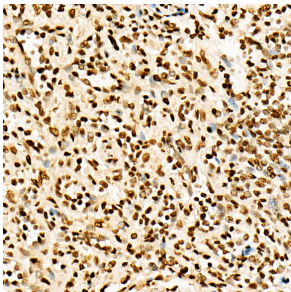
Images continued:



Western blot analysis of C6, using Anti-Histone H3 (acetyl Lys27) Antibody (A16739) at 1:2,000 dilution. C6 cells were treated by TSA (1  $\mu$ M) at 37°C for 18 hours. The secondary antibody was Goat Anti-Rabbit IgG H&L Antibody (HRP) at 1:10,000 dilution. Lysates/proteins were present at 25 $\mu$ g per lane. The blocking buffer used was 3% non-fat dry milk in TBST. Detection was with a ECL Basic Kit. Exposure time: 1s.



Immunohistochemistry analysis of paraffin-embedded human colon tissue using Anti-Histone H3 (acetyl Lys27) Antibody (A16739) at a dilution of 1:200 (40x lens). Perform high pressure antigen retrieval with 10 mM citrate buffer pH 6.0 before commencing with IHC staining protocol.



Immunohistochemistry analysis of paraffin-embedded human spleen using Anti-Histone H3 (acetyl Lys27) Antibody (A16739) at a dilution of 1:200 (40x lens). Perform high pressure antigen retrieval with 10 mM citrate buffer pH 6.0 before commencing with IHC staining protocol.