

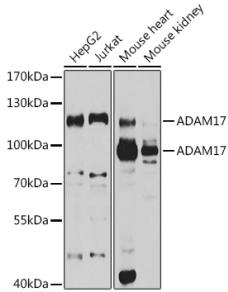
Anti-ADAM17 Antibody (A16782)

Specifications:

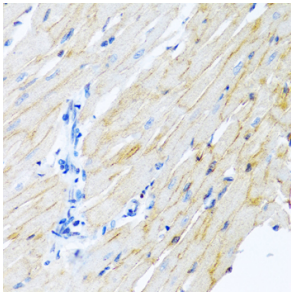
Name:	Anti-ADAM17 Antibody
Description:	Rabbit polyclonal antibody to ADAM17.
Applications:	WB, IHC, ICC/IF
Recommended Dilutions:	WB: 1:500-1:1,000, IHC: 1:100-1:200, ICC/IF: 1:50-1:200
Reactivity:	Human, Mouse, Rat
Immunogen:	A synthetic peptide corresponding to a sequence within amino acids 700 to the C-terminus of human ADAM17 (NP_003174.3).
Sequence:	KQYESLSLFHPSNVEMLSMDSASVRIIKPFPAPQTPGRLQPAPVIPSAPAAPKLDHQ RMDTIQEDPSTDSHMDEDGFEEKDPFPNSSTAAKSFEDLTDHPVTRSEKAASFKLQRQN RVDSKETEC
Host:	Rabbit
Clonality:	Polyclonal
Isotype:	IgG
Conjugate:	Unconjugated
Purification:	Affinity purification.
Molecular Weight:	120 kDa / 100 kDa
Product Form:	Liquid
Formulation:	Supplied in Phosphate Buffered Saline, pH 7.3, with 50% Glycerol and 0.02% Sodium Azide.
Storage:	Shipped at 4°C. Upon delivery aliquot and store at -20°C. Avoid freeze / thaw cycles.
Disclaimer:	This product is for research use only. It is not intended for diagnostic or therapeutic use.

Anti-ADAM17 Antibody (A16782)

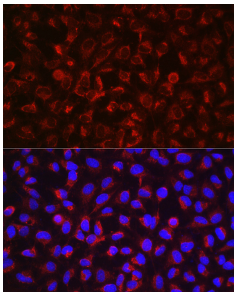
Images:



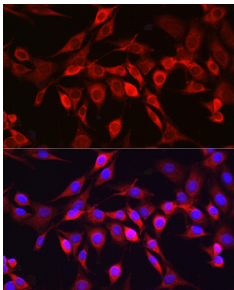
Western blot analysis of extracts of various cell lines, using Anti-ADAM17 Antibody (A16782) at 1:1,000 dilution. The secondary antibody was Goat Anti-Rabbit IgG H&L Antibody (HRP) at 1:10,000 dilution. Lysates/proteins were present at 25 μ g per lane. The blocking buffer used was 3% non-fat dry milk in TBST. Detection was with a ECL Enhanced Kit (RM00021). Exposure time: 5s.



Immunohistochemistry analysis of paraffin-embedded rat heart using Anti-ADAM17 Antibody (A16782) at a dilution of 1:100 (40x lens). Perform microwave antigen retrieval with 10 mM PBS buffer pH 7.2 before commencing with IHC staining protocol.



Immunofluorescence analysis of HeLa cells using Anti-ADAM17 Antibody (A16782) at a dilution of 1:50 (40x lens). DAPI was used to stain the cell nuclei (blue).



Immunofluorescence analysis of NIH/3T3 cells using Anti-ADAM17 Antibody (A16782) at a dilution of 1:50 (40x lens). DAPI was used to stain the cell nuclei (blue).