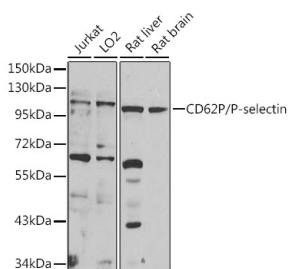


## Anti-P-Selectin Antibody (A16815)

### Specifications:

Name:	Anti-P-Selectin Antibody
Description:	Rabbit polyclonal antibody to P-Selectin.
Applications:	WB, IHC
Recommended Dilutions:	WB: 1:500-1:2,000, IHC: 1:50-1:200
Reactivity:	Human, Rat
Immunogen:	Recombinant fusion protein containing a sequence corresponding to amino acids 30-200 of human CD62P/P-selectin (NP_002996.2).
Sequence:	ISELTNQKEVAAWTYHYSTKAYSWNISRKYQCQNRYTDLVAIQNKNEIDYLNKVLPPYYS SYYWIGIRKNNKTWTWVGTKKALTNEAENWADNEPNKRNNEDCWEIYIKSPSAPGKW NDEHCLKKKHALCYTASCQDMSCSKQGECLETIGNYTCSCYPGFYGPCECEYVREC
Host:	Rabbit
Clonality:	Polyclonal
Isotype:	IgG
Conjugate:	Unconjugated
Purification:	Affinity purification.
Molecular Weight:	115 kDa
Product Form:	Liquid
Formulation:	Supplied in Phosphate Buffered Saline, pH 7.3, with 50% Glycerol and 0.02% Sodium Azide.
Storage:	Shipped at 4°C. Upon delivery aliquot and store at -20°C. Avoid freeze / thaw cycles.
Disclaimer:	This product is for research use only. It is not intended for diagnostic or therapeutic use.

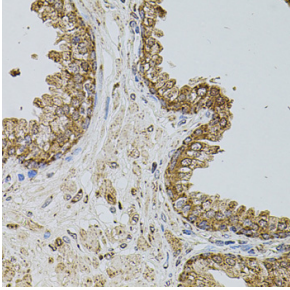
### Images:



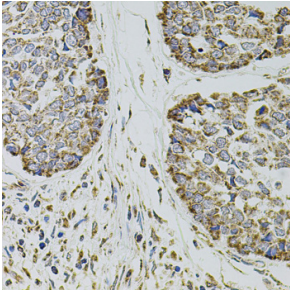
Western blot analysis of extracts of various cell lines, using Anti-P-Selectin Antibody (A16815) at 1:1,000 dilution. The secondary antibody was Goat Anti-Rabbit IgG H&L Antibody (HRP) at 1:10,000 dilution. Lysates/proteins were present at 25µg per lane. The blocking buffer used was 3% non-fat dry milk in TBST. Detection was with a ECL Enhanced Kit (RM00021). Exposure time: 10s.

## Anti-P-Selectin Antibody (A16815)

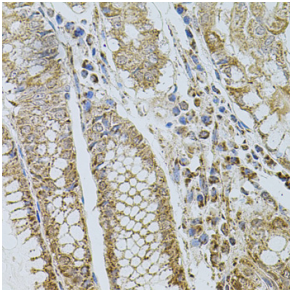
Images continued:



Immunohistochemistry analysis of paraffin-embedded human prostate using Anti-P-Selectin Antibody (A16815) at a dilution of 1:100 (40x lens).



Immunohistochemistry analysis of paraffin-embedded human esophageal cancer using Anti-P-Selectin Antibody (A16815) at a dilution of 1:100 (40x lens).



Immunohistochemistry analysis of paraffin-embedded human stomach using Anti-P-Selectin Antibody (A16815) at a dilution of 1:100 (40x lens).