

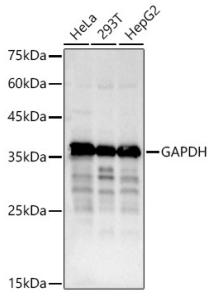
Anti-GAPDH Antibody (A17302)

Specifications:

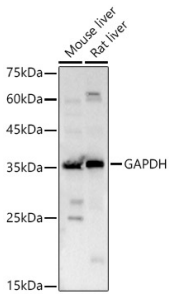
Name:	Anti-GAPDH Antibody
Description:	Rabbit polyclonal antibody to GAPDH.
Applications:	WB, IHC, ICC/IF, IP
Recommended Dilutions:	WB: 1:10,000-1:30,000, IHC: 1:50-1:200, ICC/IF: 1:50-1:200, IP: 1:2,000-1:20,000
Reactivity:	Human, Mouse, Rat
Immunogen:	Recombinant fusion protein containing a sequence corresponding to amino acids 1-335 of human GAPDH (NP_002037.2).
Sequence:	MGKVKVGVNGFGRIGRLVTRAAFNSGKVDIVAINDPFIDLNYMVYMFQYDSTHGKFHG TVKAENGLVINGNPITIFQERDPSKIKWGDAGAEYVVESTGVFTTMEKAG AHLQGG A KRVIISAPSADAPMFVMGVNHEKYDNSLKIISNASCTTNCLAPLAKVIHDNFGIVEGL MTTVHAITATQKTVDGPSGKLWRDGRGALQNIIPASTGAAKAVGKVIPELNGKLTGMA FRVPTANVSVDLTCRLEKPAKYDDIKKVVKQASEGPLKGILGYTEHQVSSDFNSDT HSSTFDAGAGIALNDHFVKLISWYDNEFGYSNRVVDLMAHMASKE
Host:	Rabbit
Clonality:	Polyclonal
Isotype:	IgG
Conjugate:	Unconjugated
Purification:	Affinity purification.
Molecular Weight:	36 kDa
Product Form:	Liquid
Formulation:	Supplied in Phosphate Buffered Saline, pH 7.3, with 50% Glycerol and 0.01% Thiomersal.
Storage:	Shipped at 4°C. Upon delivery aliquot and store at -20°C. Avoid freeze / thaw cycles.
Disclaimer:	This product is for research use only. It is not intended for diagnostic or therapeutic use.

Anti-GAPDH Antibody (A17302)

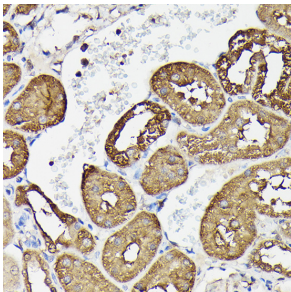
Images:



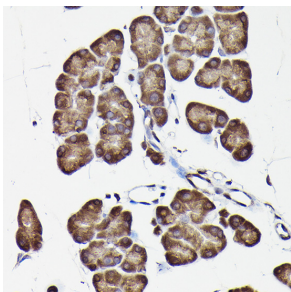
Western blot analysis of extracts of various cell lines, using Anti-GAPDH Antibody (A17302) at 1:10,000 dilution. Lysates/proteins were present at 25 μ g per lane. The blocking buffer used was 3% non-fat dry milk in TBST. Detection was with a ECL Basic Kit. Exposure time: 3s.



Western blot analysis of extracts of various cell lines, using Anti-GAPDH Antibody (A17302) at 1:10,000 dilution. Lysates/proteins were present at 25 μ g per lane. The blocking buffer used was 3% non-fat dry milk in TBST. Detection was with a ECL Basic Kit. Exposure time: 10s.



Immunohistochemistry analysis of paraffin-embedded rat kidney using Anti-GAPDH Antibody (A17302) Immunohistochemistry analysis of paraffin-embedded rat kidney using GAPDH Rabbit polyclonal antibody (AC001) at a dilution of 1:100 (40x lens). Perform high pressure antigen retrieval with 10 mM citrate buffer pH 6.0 before commencing with IHC staining protocol.



Immunohistochemistry analysis of paraffin-embedded rat pancreas using Anti-GAPDH Antibody (A17302) Immunohistochemistry analysis of paraffin-embedded rat pancreas using GAPDH Rabbit polyclonal antibody (AC001) at a dilution of 1:100 (40x lens). Perform high pressure antigen retrieval with 10 mM citrate buffer pH 6.0 before commencing with IHC staining protocol.