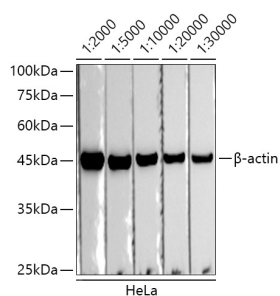


## Donkey Anti-Rabbit IgG H&L Antibody (HRP) (A17344)

### Specifications:

Name:	Donkey Anti-Rabbit IgG H&L Antibody (HRP)
Description:	Donkey Anti-Rabbit IgG H&L Antibody (HRP).
Host Species:	Donkey
Target Species:	Rabbit
Applications:	WB, IHC
Recommended Dilutions:	WB: 1:5,000-1:10,000, IHC: 1:500-1:1,000
Immunogen:	Rabbit IgG.
Clonality:	Polyclonal
Isotype:	IgG
Conjugate:	HRP
Product Form:	Liquid
Purification:	Affinity purification.
Formulation:	Supplied in Phosphate Buffered Saline, pH 7.3, with 50% Glycerol and 0.75% BSA.
Storage:	Shipped at 4°C. Upon delivery aliquot and store at -20°C. Avoid freeze / thaw cycles.
Disclaimer:	This product is for research use only. It is not intended for diagnostic or therapeutic use.

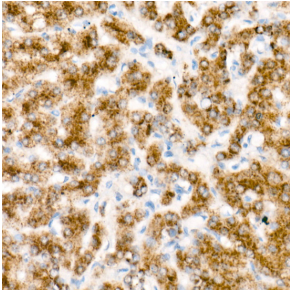
### Images:



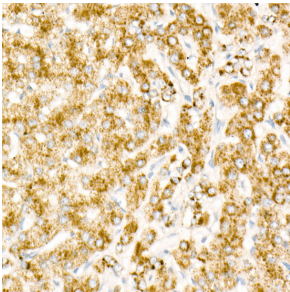
Western blot analysis of extracts of HeLa cells, using Donkey Anti-Rabbit IgG H&L Antibody (HRP) (A17344) at 1:2000-1:30000 dilution. Lysates/proteins were present at 25µg per lane. The blocking buffer used was 3% non-fat dry milk in TBST. Detection was with a ECL Basic Kit. Exposure time: 30s.

## Donkey Anti-Rabbit IgG H&L Antibody (HRP) (A17344)

Images continued:



Immunohistochemistry analysis of paraffin-embedded human liver (primary antibody is acox1) using Donkey Anti-Rabbit IgG H&L Antibody (HRP) (A17344) at a dilution of 1:1,000 (40x lens). Perform high pressure antigen retrieval with 10 mM citrate buffer pH 6.0 before commencing with IHC staining protocol.



Immunohistochemistry analysis of paraffin-embedded human liver (the primary antibody is acox1, and the control secondary antibody is stained) using Donkey Anti-Rabbit IgG H&L Antibody (HRP) (A17344) at a dilution of 1:1,000 (40x lens). Perform high pressure antigen retrieval with 10 mM citrate buffer pH 6.0 before commencing with IHC staining protocol.