

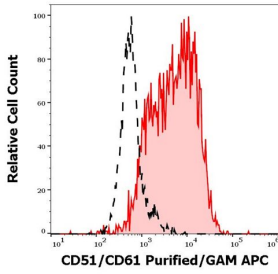
Anti-CD51/CD61 Antibody [23C6] (A242878)

Specifications:

Name:	Anti-CD51/CD61 Antibody [23C6]
Description:	Mouse monoclonal [23C6] antibody to CD51/CD61.
Specificity:	This antibody recognizes an extracellular epitope on CD51/CD61 complex, that is expressed mainly on human osteoclasts, but also on others cells including placenta, or melanoma cell lines. The epitope is native and sensitive to fixation. In chicken this antibody can be used to selectively identify the thrombocytes.
Applications:	IP, IHC-Fr, Flow Cytometry
Recommended Dilutions:	Flow Cytometry: 2-6 µg/ml
Reactivity:	Human, Chicken
Cross Reactivity:	This antibody does not react with Rabbit, Porcine, and Bovine.
Immunogen:	A cell suspension containing osteoclasts from osteoclastomas.
Host:	Mouse
Clonality:	Monoclonal
Clone ID:	23C6
Isotype:	IgG1
Conjugate:	Unconjugated
Purification:	Protein A chromatography.
Concentration:	1 mg/ml
Product Form:	Liquid
Formulation:	Supplied in Phosphate Buffered Saline with 15 mM Sodium Azide.
Storage:	Shipped at 4°C. Upon delivery aliquot and store at -20°C. Avoid freeze / thaw cycles.
Disclaimer:	This product is for research use only. It is not intended for diagnostic or therapeutic use.

Anti-CD51/CD61 Antibody [23C6] (A242878)

Images:



Separation of MCF-7 cells stained using Anti-CD51/CD61 Antibody (concentration in sample 1.7 $\mu\text{g/ml}$, GAM APC, red-filled) from MCF-7 cells unstained by primary antibody (GAM-APC, black-dashed) in flow cytometry analysis (surface staining).