

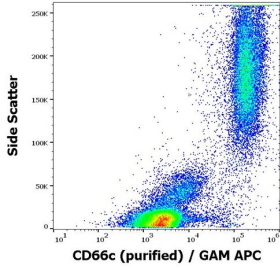
Anti-CD66c Antibody [B6.2] (A242879)

Specifications:

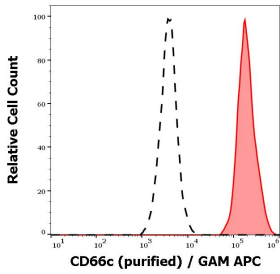
Name:	Anti-CD66c Antibody [B6.2]
Description:	Mouse monoclonal [B6.2] antibody to CD66c.
Specificity:	This antibody recognizes a conformationally dependent epitope of native CD66c, a GPI-anchored extracellular glycoprotein expressed on granulocytes and epithelial cells.
Applications:	Flow Cytometry, IP
Recommended Dilutions:	Flow Cytometry: 3-12 µg/ml
Reactivity:	Human
Immunogen:	Extracts from human breast carcinoma cells.
Host:	Mouse
Clonality:	Monoclonal
Clone ID:	B6.2
Isotype:	IgG1
Light Chains:	kappa
Conjugate:	Unconjugated
Purification:	Protein A chromatography.
Concentration:	1 mg/ml
Product Form:	Liquid
Formulation:	Supplied in Phosphate Buffered Saline with 15 mM Sodium Azide.
Storage:	Shipped at 4°C. Upon delivery aliquot and store at -20°C. Avoid freeze / thaw cycles.
Disclaimer:	This product is for research use only. It is not intended for diagnostic or therapeutic use.

Anti-CD66c Antibody [B6.2] (A242879)

Images:



Flow cytometry surface staining pattern of human peripheral whole blood stained using Anti-CD66c Antibody (concentration in sample 3 µg/ml, GAM-APC).



Separation of neutrophil granulocytes stained Anti-CD66c Antibody (concentration in sample 3 µg/ml, GAM APC, red-filled) from neutrophil granulocytes unstained by primary antibody (GAM-APC, black-dashed) in flow cytometry analysis (surface staining).