

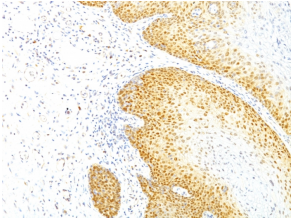
## Anti-p27 KIP 1 Antibody [KIP1/769] (A248096)

### Specifications:

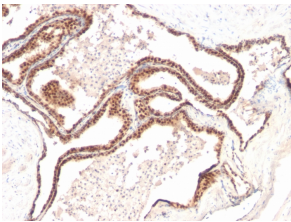
Name:	Anti-p27 KIP 1 Antibody [KIP1/769]
Description:	Mouse monoclonal [KIP1/769] antibody to p27 KIP 1.
Specificity:	This antibody recognizes a 27kDa protein, identified as the p27Kip1, a cell cycle regulatory mitotic inhibitor. It is highly specific and shows no cross-reaction with other related mitotic inhibitors. p27Kip1 functions as a negative regulator of G1 progression and has been proposed to function as a possible mediator of TGF- induced G1 arrest. p27Kip1 is a candidate tumor suppressor gene. This antibody is excellent for staining of formalin-fixed tissues.
Applications:	Flow Cytometry, IF, WB, IHC-P
Recommended Dilutions:	Flow Cytometry: 1-2 µg/million cells, IF: 1-2 µg/ml, WB: 1-2 µg/ml, IHC-P: 0.25-0.5 µg/ml
Reactivity:	Human, Monkey, Mouse, Rat
Immunogen:	Recombinant full-length human CDKN1B protein.
Host:	Mouse
Clonality:	Monoclonal
Clone ID:	KIP1/769
Isotype:	IgG1
Light Chains:	kappa
Conjugate:	Unconjugated
Purification:	Protein A/G chromatography.
Concentration:	200 µg/ml
Product Form:	Liquid
Formulation:	Supplied in 10mM Phosphate Buffered Saline with 0.05% BSA and 0.05% Sodium Azide.
Storage:	Shipped at 4°C. Upon delivery aliquot and store at -20°C. Avoid freeze / thaw cycles.
General Notes:	This monoclonal antibody is also available in a different formulation without BSA and Sodium Azide - Anti-p27 KIP 1 Antibody [KIP1/769] - BSA and Azide free (A251279).
Disclaimer:	This product is for research use only. It is not intended for diagnostic or therapeutic use.

## Anti-p27 KIP 1 Antibody [KIP1/769] (A248096)

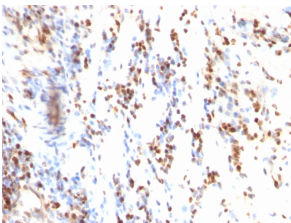
### Images:



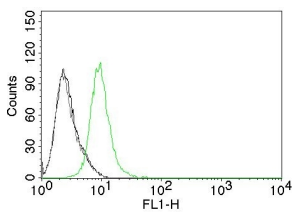
Immunohistochemical analysis of formalin-fixed, paraffin-embedded human cervical carcinoma using Anti-p27 KIP 1 Antibody [KIP1/769].



Immunohistochemical analysis of formalin-fixed, paraffin-embedded human prostate carcinoma using Anti-p27 KIP 1 Antibody [KIP1/769].



Immunohistochemical analysis of formalin-fixed, paraffin-embedded human colon carcinoma using Anti-p27 KIP 1 Antibody [KIP1/769].



Flow cytometric analysis of Jurkat cells labeling p27 with Anti-p27 KIP 1 Antibody [KIP1/769] (AF488) (Green). Cells alone (Black). Isotype Control (Grey).