

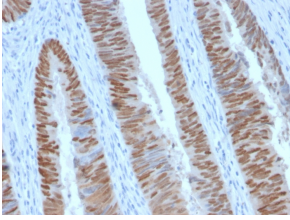
Anti-CDX2 Antibody [CDX2/2951R] (A248115)

Specifications:

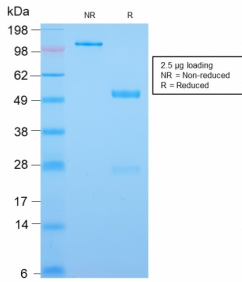
Name:	Anti-CDX2 Antibody [CDX2/2951R]
Description:	Recombinant rabbit monoclonal [CDX2/2951R] antibody to CDX2.
Specificity:	The intestine-specific transcription factors CDX1 and CDX2 are important for directing intestinal development, differentiation, proliferation and maintenance of the intestinal phenotype. CDX2 protein expression has been seen in GI carcinomas. Anti-CDX2 has been useful to establish GI origin of metastatic adenocarcinomas and carcinoids and is especially useful to distinguish metastatic colorectal adenocarcinoma from lung adenocarcinoma. However, mucinous carcinomas of the ovary also express CDX2 protein. It limits the usefulness of this marker in the distinction of metastatic colorectal adenocarcinoma from mucinous carcinoma of the ovary.
Applications:	ELISA, IHC-P
Recommended Dilutions:	IHC-P: 1-2 µg/ml
Reactivity:	Human
Immunogen:	Recombinant fragment, around amino acids 150-249, of human CDX2 protein. The exact sequence is proprietary.
Host:	Rabbit
Clonality:	Monoclonal
Clone ID:	CDX2/2951R
Isotype:	IgG
Conjugate:	Unconjugated
Purification:	Protein A/G chromatography.
Concentration:	200 µg/ml
Product Form:	Liquid
Formulation:	Supplied in 10mM Phosphate Buffered Saline with 0.05% BSA and 0.05% Sodium Azide.
Storage:	Shipped at 4°C. Upon delivery aliquot and store at -20°C. Avoid freeze / thaw cycles.
General Notes:	This monoclonal antibody is also available in a different formulation without BSA and Sodium Azide - Anti-CDX2 Antibody [CDX2/2951R] - BSA and Azide free (A251298).
Disclaimer:	This product is for research use only. It is not intended for diagnostic or therapeutic use.

Anti-CDX2 Antibody [CDX2/2951R] (A248115)

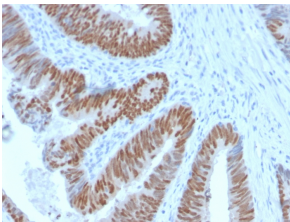
Images:



Immunohistochemical analysis of formalin-fixed, paraffin-embedded human colon carcinoma using Anti-CDX2 Antibody [CDX2/2951R].



SDS-PAGE analysis of Anti-CDX2 Antibody [CDX2/2951R] under non-reduced and reduced conditions; showing intact IgG and intact heavy and light chains, respectively. SDS-PAGE analysis confirms the integrity and purity of the antibody.



Immunohistochemical analysis of formalin-fixed, paraffin-embedded human colon carcinoma using Anti-CDX2 Antibody [CDX2/2951R].