

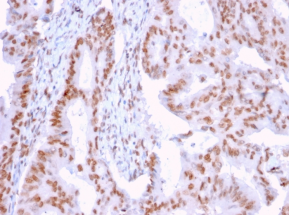
## Anti-DMC1 Antibody [2H12/4] (A248212)

### Specifications:

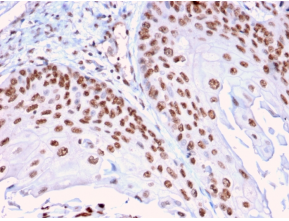
Name:	Anti-DMC1 Antibody [2H12/4]
Description:	Mouse monoclonal [2H12/4] antibody to DMC1.
Applications:	IF, WB, IHC-P
Recommended Dilutions:	IF: 1-2 µg/ml, WB: 1-2 µg/ml, IHC-P: 1-2 µg/ml
Reactivity:	Human, Mouse, Rat, Bovine
Immunogen:	Recombinant full-length human DMC1 protein.
Host:	Mouse
Clonality:	Monoclonal
Clone ID:	2H12/4
Isotype:	IgG2a
Light Chains:	kappa
Conjugate:	Unconjugated
Purification:	Protein A/G chromatography.
Concentration:	200 µg/ml
Product Form:	Liquid
Formulation:	Supplied in 10mM Phosphate Buffered Saline with 0.05% BSA and 0.05% Sodium Azide.
Storage:	Shipped at 4°C. Upon delivery aliquot and store at -20°C. Avoid freeze / thaw cycles.
General Notes:	This monoclonal antibody is also available in a different formulation without BSA and Sodium Azide - Anti-DMC1 Antibody [2H12/4] - BSA and Azide free (A251395).
Disclaimer:	This product is for research use only. It is not intended for diagnostic or therapeutic use.

## Anti-DMC1 Antibody [2H12/4] (A248212)

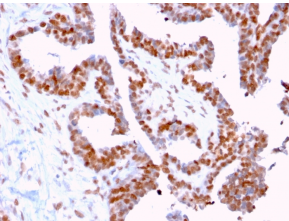
### Images:



Immunohistochemical analysis of formalin-fixed, paraffin-embedded human breast carcinoma using Anti-DMC1 Antibody [2H12/4].



Immunohistochemical analysis of formalin-fixed, paraffin-embedded human cervical carcinoma using Anti-DMC1 Antibody [2H12/4].



Immunohistochemical analysis of formalin-fixed, paraffin-embedded human prostate carcinoma using Anti-DMC1 Antibody [2H12/4].