

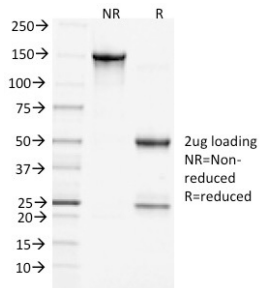
Anti-Clathrin Heavy Chain Antibody [CHC/1432] (A248228)

Specifications:

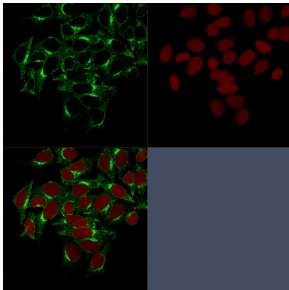
Name:	Anti-Clathrin Heavy Chain Antibody [CHC/1432]
Description:	Mouse monoclonal [CHC/1432] antibody to Clathrin Heavy Chain.
Specificity:	This antibody recognizes protein of 192kDa, which is identified as Clathrin Heavy Chain. Clathrin is composed of three heavy chains and three light chains, which associate non-covalently to form a triskelion structure. Clathrin heavy chain (HC) is composed of a terminal globular domain, a distal segment and a proximal segment containing a light chain-binding site. The proximal segment of the Clathrin HC protein is essential for interactions between Clathrin heavy chains and light chains, which result in the formation of the triskelion structure.
Applications:	IF
Recommended Dilutions:	IF: 1-2 µg/ml
Reactivity:	Mouse, Rat, Bovine, Canine, Human, Porcine, Xenopus laevis, Bird, African Green Monkey
Immunogen:	Recombinant full-length human Clathrin Heavy Chain protein.
Host:	Mouse
Clonality:	Monoclonal
Clone ID:	CHC/1432
Isotype:	IgG1
Light Chains:	kappa
Conjugate:	Unconjugated
Purification:	Protein A/G chromatography.
Concentration:	200 µg/ml
Product Form:	Liquid
Formulation:	Supplied in 10mM Phosphate Buffered Saline with 0.05% BSA and 0.05% Sodium Azide.
Storage:	Shipped at 4°C. Upon delivery aliquot and store at -20°C. Avoid freeze / thaw cycles.
General Notes:	This monoclonal antibody is also available in a different formulation without BSA and Sodium Azide - Anti-Clathrin Heavy Chain Antibody [CHC/1432] - BSA and Azide free (A251411).
Disclaimer:	This product is for research use only. It is not intended for diagnostic or therapeutic use.

Anti-Clathrin Heavy Chain Antibody [CHC/1432] (A248228)

Images:



SDS-PAGE analysis of Anti-Clathrin Heavy Chain Antibody [CHC/1432] under non-reduced and reduced conditions; showing intact IgG and intact heavy and light chains, respectively. SDS-PAGE analysis confirms the integrity and purity of the antibody.



Immunofluorescent analysis of HeLa cells stained with Anti-Clathrin Heavy Chain Antibody [CHC/1432] followed by Goat Anti-Mouse IgG (CF® 488) (Green). Nuclei are stained with RedDot.