

## Anti-CD35 Antibody [SPM554] (A248258)

### Specifications:

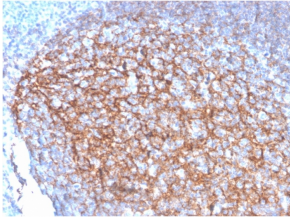
Name:	Anti-CD35 Antibody [SPM554]
Description:	Mouse monoclonal [SPM554] antibody to CD35.
Specificity:	This antibody recognizes a protein of 210-220kDa, which is identified as the complement receptor 1 (CR1)/CD35. This MAb is specific for a site in CR1 that is distal from the C3b-binding site, so that it is unable to block CR1 activity. This MAb is highly specific to CR1 and shows no cross-reaction with CR2. The primary function of CR1 is to serve as the cellular receptor for C3b and C4b, the most important components of the complement system leading to clearance of foreign macromolecules. The Knops blood group system is a system of antigens located on this protein. Follicular dendritic cells (FDC) are restricted to the B-cell regions of secondary lymphoid follicles. They are CD21+/CD35+/CD1a-. This MAb labels follicular dendritic cells and follicular dendritic cell sarcoma.
Applications:	Flow Cytometry, IF, IHC-P
Recommended Dilutions:	Flow Cytometry: 1-2 µg/million cells, IF: 1-2 µg/ml, IHC-P: 1-2 µg/ml
Reactivity:	Human, Baboon, Cynomolgus Monkey, Rhesus Monkey
Immunogen:	Intact human monocytes.
Host:	Mouse
Clonality:	Monoclonal
Clone ID:	SPM554
Isotype:	IgG1
Light Chains:	kappa
Conjugate:	Unconjugated
Purification:	Protein A/G chromatography.
Concentration:	200 µg/ml
Product Form:	Liquid
Formulation:	Supplied in 10mM Phosphate Buffered Saline with 0.05% BSA and 0.05% Sodium Azide.
Storage:	Shipped at 4°C. Upon delivery aliquot and store at -20°C. Avoid freeze / thaw cycles.
General Notes:	This monoclonal antibody is also available in a different formulation without BSA and Sodium Azide - Anti-CD35 Antibody [SPM554] - BSA and Azide free (A251440).

## Anti-CD35 Antibody [SPM554] (A248258)

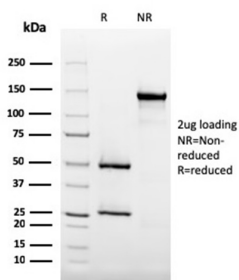
### Specifications continued:

Disclaimer: This product is for research use only. It is not intended for diagnostic or therapeutic use.

### Images:



Immunohistochemical analysis of formalin-fixed, paraffin-embedded human tonsil using Anti-CD35 Antibody [SPM554].



SDS-PAGE analysis of Anti-CD35 Antibody [SPM554] under non-reduced and reduced conditions; showing intact IgG and intact heavy and light chains, respectively. SDS-PAGE analysis confirms the integrity and purity of the antibody.