

Anti-beta Catenin Antibody [6F9] (A248296)

Specifications:

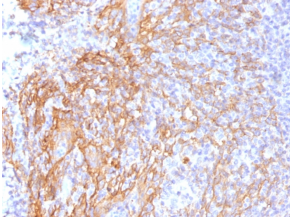
Name:	Anti-beta Catenin Antibody [6F9]
Description:	Mouse monoclonal [6F9] antibody to beta Catenin.
Specificity:	This antibody recognizes a protein of 92kDa, which is identified as beta-catenin. It shows no cross-reaction with gamma-catenin (also known as plakoglobin). The catenins, alpha, beta and gamma bind to the highly conserved, intracellular cytoplasmic tail of E-cadherin. Together, the catenin/cadherin complexes play an important role mediating cellular adhesion. Alpha-catenin was initially described as an E-cadherin-associated protein, and has been shown to associate with other members of the cadherin family, such as N-cadherin and P-cadherin. Beta-catenin associates with the cytoplasmic portion of E-cadherin, which is necessary for the function of E-cadherin as an adhesion molecule. Beta-catenin has also been found in complexes with the tumor suppressor protein APC.
Applications:	Flow Cytometry, IF, WB, IHC-P
Recommended Dilutions:	Flow Cytometry: 1-2 µg/million cells, IF: 1-2 µg/ml, WB: 1-2 µg/ml, IHC-P: 1-2 µg/ml
Reactivity:	Human, Bovine, Canine, Chicken
Immunogen:	Recombinant chicken beta Catenin.
Host:	Mouse
Clonality:	Monoclonal
Clone ID:	6F9
Isotype:	IgG1
Light Chains:	kappa
Conjugate:	Unconjugated
Purification:	Protein A/G chromatography.
Concentration:	200 µg/ml
Product Form:	Liquid
Formulation:	Supplied in 10mM Phosphate Buffered Saline with 0.05% BSA and 0.05% Sodium Azide.
Storage:	Shipped at 4°C. Upon delivery aliquot and store at -20°C. Avoid freeze / thaw cycles.
General Notes:	This monoclonal antibody is also available in a different formulation without BSA and Sodium Azide - Anti-beta Catenin Antibody [6F9] - BSA and Azide free (A251478).

Anti-beta Catenin Antibody [6F9] (A248296)

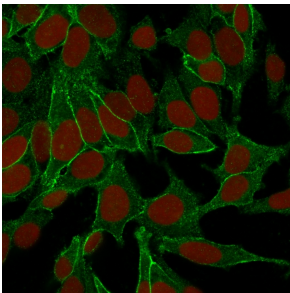
Specifications continued:

Disclaimer: This product is for research use only. It is not intended for diagnostic or therapeutic use.

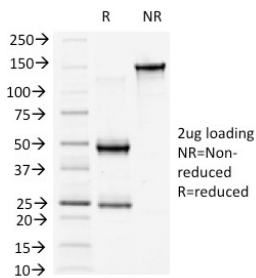
Images:



Immunohistochemical analysis of formalin-fixed, paraffin-embedded human tonsil using Anti-beta Catenin Antibody [6F9].



Immunofluorescent analysis of HeLa cells stained with Anti-beta Catenin Antibody [6F9] (CF® 488) (Green). Nuclear counterstain is RedDot.



SDS-PAGE analysis of Anti-beta Catenin Antibody [6F9] under non-reduced and reduced conditions; showing intact IgG and intact heavy and light chains, respectively. SDS-PAGE analysis confirms the integrity and purity of the antibody.