

Anti-delta 1 Catenin Antibody [25a] (A248303)

Specifications:

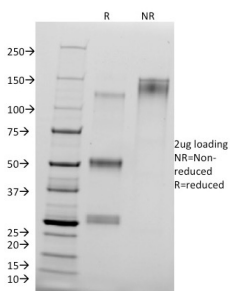
Name:	Anti-delta 1 Catenin Antibody [25a]
Description:	Mouse monoclonal [25a] antibody to delta 1 Catenin.
Specificity:	The membrane associated protein pp120 Src substrate (p120 Catenin, p120cas) was identified as a tyrosine kinase substrate that is phosphorylated in Src transformed cells or in response to growth factor stimulation. It shares structural similarity with the Drosophila Armadillo protein and the vertebrate beta-catenin and gamma-catenin proteins. Its characteristic Arm domain that is composed of 42-amino acid motif repeats evidences this similarity. In the cell, p120 Catenin is localized to the E-Cadherin/catenins cell adhesion complex. Like beta- and gamma-catenin, p120 Catenin directly associates with the cytoplasmic C-terminus of E-Cadherin via its Arm domain and may similarly interact with other Cadherins. It exists as four isoforms that range in size from 90-115kDa. Expression of these isoforms is heterogeneous in human carcinomas, suggesting that altered pp120 expression contributes to malignancy due to loss of functional cell adhesions. Multiple tyrosine residues (Y96, Y112, Y228, Y280, Y257, Y291, Y296, and Y302) in p120 Catenin are phosphorylated by Src and these phosphorylations may facilitate interaction with PTP1C/SHP-1 in response to EGF stimulation. Thus, p120 Catenin is an Arm domain protein that interacts with both cell adhesion molecules, such as cadherins and cell signaling molecules, such as PTP1C.
Applications:	ELISA, Flow Cytometry, IF
Recommended Dilutions:	Flow Cytometry: 1-2 µg/million cells, IF: 1-2 µg/ml
Reactivity:	Human, Mouse, Rat
Immunogen:	Mouse delta 1 Catenin (phospho Tyr96).
Host:	Mouse
Clonality:	Monoclonal
Clone ID:	25a
Isotype:	IgG1
Light Chains:	kappa
Conjugate:	Unconjugated
Purification:	Protein A/G chromatography.
Concentration:	200 µg/ml
Product Form:	Liquid
Formulation:	Supplied in 10mM Phosphate Buffered Saline with 0.05% BSA and 0.05% Sodium Azide.

Anti-delta 1 Catenin Antibody [25a] (A248303)

Specifications continued:

Storage:	Shipped at 4°C. Upon delivery aliquot and store at -20°C. Avoid freeze / thaw cycles.
General Notes:	This monoclonal antibody is also available in a different formulation without BSA and Sodium Azide - Anti-delta 1 Catenin Antibody [25a] - BSA and Azide free (A251485).
Disclaimer:	This product is for research use only. It is not intended for diagnostic or therapeutic use.

Images:



SDS-PAGE analysis of Anti-delta 1 Catenin Antibody [25a] under non-reduced and reduced conditions; showing intact IgG and intact heavy and light chains, respectively. SDS-PAGE analysis confirms the integrity and purity of the antibody.