

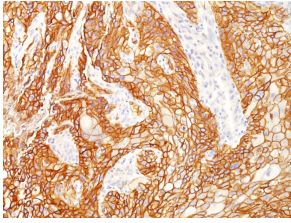
## Anti-EGFR Antibody [GFR/2341] (A248393)

### Specifications:

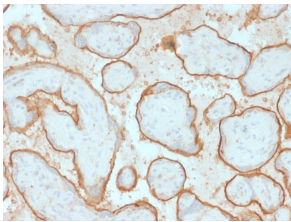
Name:	Anti-EGFR Antibody [GFR/2341]
Description:	Mouse monoclonal [GFR/2341] antibody to EGFR.
Specificity:	This antibody recognizes a protein of 170kDa, identified as EGFR. EGFR is type I receptor tyrosine kinase with sequence homology to erbB-1, -2, -3 -4 or HER-1, -2, -3 -4. It binds to Epidermal Growth Factor (EGF), Transforming Growth Factor- $\alpha$ (TGF- $\alpha$ ), Heparin-binding EGF (HB-EGF), amphiregulin, betacellulin and epiregulin. EGFR is overexpressed in tumors of breast, brain, bladder, lung, gastric, head neck, esophagus, cervix, vulva, ovary, and endometrium. It is predominantly present in squamous cell carcinomas.
Applications:	WB, IHC-P
Recommended Dilutions:	WB: 1-2 $\mu$ g/ml, IHC-P: 1-2 $\mu$ g/ml
Reactivity:	Human
Immunogen:	Recombinant fragment, around amino acids 344-492, of human EGFR protein. The exact sequence is proprietary.
Host:	Mouse
Clonality:	Monoclonal
Clone ID:	GFR/2341
Isotype:	IgG2b
Light Chains:	kappa
Conjugate:	Unconjugated
Purification:	Protein A/G chromatography.
Concentration:	200 $\mu$ g/ml
Product Form:	Liquid
Formulation:	Supplied in 10mM Phosphate Buffered Saline with 0.05% BSA and 0.05% Sodium Azide.
Storage:	Shipped at 4°C. Upon delivery aliquot and store at -20°C. Avoid freeze / thaw cycles.
General Notes:	This monoclonal antibody is also available in a different formulation without BSA and Sodium Azide - Anti-EGFR Antibody [GFR/2341] - BSA and Azide free (A251575).
Disclaimer:	This product is for research use only. It is not intended for diagnostic or therapeutic use.

# Anti-EGFR Antibody [GFR/2341] (A248393)

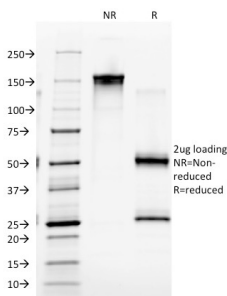
## Images:



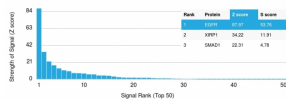
Immunohistochemical analysis of formalin-fixed, paraffin-embedded human lung squamous cell carcinoma using Anti-EGFR Antibody [GFR/2341].



Immunohistochemical analysis of formalin-fixed, paraffin-embedded human placenta using Anti-EGFR Antibody [GFR/2341].



SDS-PAGE analysis of Anti-EGFR Antibody [GFR/2341] under non-reduced and reduced conditions; showing intact IgG and intact heavy and light chains, respectively. SDS-PAGE analysis confirms the integrity and purity of the antibody.



Analysis of protein array containing more than 19,000 full-length human proteins using Anti-EGFR Antibody [GFR/2341]. Z-Score and S- Score: The Z-score represents the strength of a signal that a monoclonal antibody (MAb) (in combination with a fluorescently-tagged anti-IgG secondary antibody) produces when binding to a particular protein on the HuProt™ array. Z-scores are described in units of standard deviations (SD's) above the mean value of all signals generated on that array. If targets on HuProt™ are arranged in descending order of the Z-score, the S-score is the difference (also in units of SD's) between the Z-score. S-score therefore represents the relative target specificity of a MAb to its intended target; a MAb is considered to be specific to its intended target, if the MAb has an S-score of at least 2.5. For example, if a MAb binds to protein X with a Z-score of 43 and to protein Y with a Z-score of 14, then the S-score for the binding of that MAb to protein X is equal to 29.