

Anti-EPO Antibody [rEPO/1367] (A248441)

Specifications:

Name:	Anti-EPO Antibody [rEPO/1367]
Description:	Recombinant mouse monoclonal [rEPO/1367] antibody to EPO.
Specificity:	This antibody recognizes a protein of about 37kDa, which is identified as Erythropoietin (EPO). Erythropoietin is a secreted, glycosylated cytokine hormone composed of four alpha helical bundles. It is the primary factor responsible for regulating erythropoiesis during steady-state conditions and in response to blood loss and hemorrhage in the adult organism. Erythropoietin is synthesized by the kidney and stimulates the proliferation and maturation of bone marrow erythroid precursor cells. The protein is found in the plasma and regulates red cell production by promoting erythroid differentiation and initiating hemoglobin synthesis.
Applications:	ELISA, IHC-P
Recommended Dilutions:	IHC-P: 2-4 µg/ml
Reactivity:	Human
Immunogen:	Recombinant fragment, around amino acids 28-162, of human EPO protein. The exact sequence is proprietary.
Host:	Mouse
Clonality:	Monoclonal
Clone ID:	rEPO/1367
Isotype:	IgG1
Light Chains:	kappa
Conjugate:	Unconjugated
Purification:	Protein A/G chromatography.
Concentration:	200 µg/ml
Product Form:	Liquid
Formulation:	Supplied in 10mM Phosphate Buffered Saline with 0.05% BSA and 0.05% Sodium Azide.
Storage:	Shipped at 4°C. Upon delivery aliquot and store at -20°C. Avoid freeze / thaw cycles.
General Notes:	This monoclonal antibody is also available in a different formulation without BSA and Sodium Azide - Anti-EPO Antibody [rEPO/1367] - BSA and Azide free (A251623).

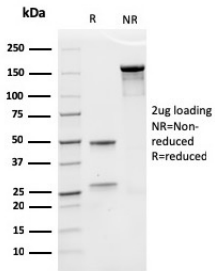
Anti-EPO Antibody [rEPO/1367] (A248441)

Specifications continued:

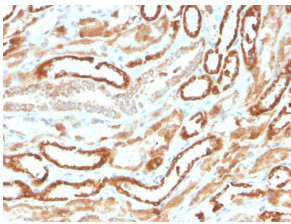
Disclaimer:

This product is for research use only. It is not intended for diagnostic or therapeutic use.

Images:



SDS-PAGE analysis of Anti-EPO Antibody [rEPO/1367] under non-reduced and reduced conditions; showing intact IgG and intact heavy and light chains, respectively. SDS-PAGE analysis confirms the integrity and purity of the antibody.



Immunohistochemical analysis of formalin-fixed, paraffin-embedded human kidney using Anti-EPO Antibody [rEPO/1367].