

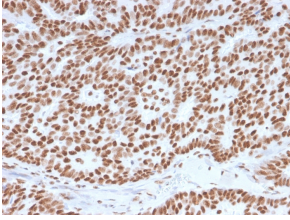
Anti-Estrogen Receptor alpha Antibody [ESR1/3557] (A248479)

Specifications:

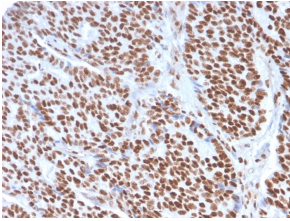
Name:	Anti-Estrogen Receptor alpha Antibody [ESR1/3557]
Description:	Mouse monoclonal [ESR1/3557] antibody to Estrogen Receptor alpha.
Specificity:	This antibody is specific to estrogen receptor alpha (ER alpha) and shows minimal cross-reaction with other members of the family. ER is an important regulator of growth and differentiation in the mammary gland. Presence of ER in breast tumors indicates an increased likelihood of response to anti-estrogen (e.g. tamoxifen) therapy. It strongly stains nuclei of epithelial cells in breast carcinomas.
Applications:	IF, Flow Cytometry, IHC-P
Recommended Dilutions:	IF: 1-2 µg/ml, Flow Cytometry: 1-2 µg/million cells, IHC-P: 1-2 µg/ml
Reactivity:	Human
Immunogen:	Recombinant fragment, around amino acids 129-312, of human ESR1 protein. The exact sequence is proprietary.
Host:	Mouse
Clonality:	Monoclonal
Clone ID:	ESR1/3557
Isotype:	IgG1
Light Chains:	kappa
Conjugate:	Unconjugated
Purification:	Protein A/G chromatography.
Concentration:	200 µg/ml
Product Form:	Liquid
Formulation:	Supplied in 10mM Phosphate Buffered Saline with 0.05% BSA and 0.05% Sodium Azide.
Storage:	Shipped at 4°C. Upon delivery aliquot and store at -20°C. Avoid freeze / thaw cycles.
General Notes:	This monoclonal antibody is also available in a different formulation without BSA and Sodium Azide - Anti-Estrogen Receptor alpha Antibody [ESR1/3557] - BSA and Azide free (A251661).
Disclaimer:	This product is for research use only. It is not intended for diagnostic or therapeutic use.

Anti-Estrogen Receptor alpha Antibody [ESR1/3557] (A248479)

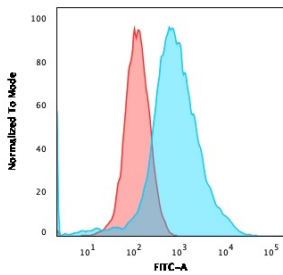
Images:



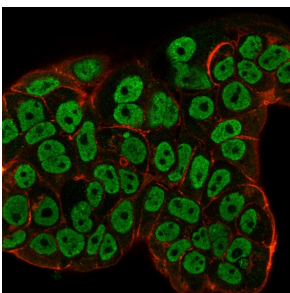
Immunohistochemical analysis of formalin-fixed, paraffin-embedded human breast carcinoma using Anti-Estrogen Receptor alpha Antibody [ESR1/3557].



Immunohistochemical analysis of formalin-fixed, paraffin-embedded human breast carcinoma using Anti-Estrogen Receptor alpha Antibody [ESR1/3557].



Flow cytometric analysis of MCF-7 cells using Anti-Estrogen Receptor alpha Antibody [ESR1/3557] followed by Goat Anti-Mouse IgG (CF® 488) (Blue). Isotype Control (Red).



Immunofluorescent analysis of MCF-7 cells stained with Anti-Estrogen Receptor alpha Antibody [ESR1/3557] followed by Goat Anti-Mouse IgG (CF® 488) (Green). Counterstain is Phalloidin (Red).